

BOUNDARY SOIL CONSERVATION DISTRICT
6813 El Paso/P.O. Box 23
Bonnerr's Ferry, ID 83805

ANNUAL PLAN
FIVE-YEAR RESOURCE CONSERVATION
BUSINESS PLAN



JULY 1, 2021 – JUNE 30, 2026

(Revised March 2021)



Executive Summary

The Boundary Soil Conservation District is one of 50 Conservation Districts in Idaho. Idaho Soil and Water Conservation Districts are political subdivisions of state government but are not state agencies. Conservation Districts are charged with carrying out a program for the conservation, use and development of soil, water, and other natural resources.

Conservation Districts are the primary entities to provide assistance to private landowners and land users in the conservation, sustainment, improvement and enhancement of Idaho's natural resources. They are catalysts for coordinating and implementing conservation programs, channeling expertise from all levels of government into action at the local level. Programs are nonregulatory; science-based technical assistance, incentive-based financial programs and informational and educational programs at the local level.

Both by legislation and by agreement the USDA Natural Resources Conservation Service provides technical assistance to landowners and land users through Conservation Districts. Each Conservation District in Idaho has a signed Mutual Agreement with the Secretary of Agriculture and the Governor of Idaho that establishes a framework for cooperation.

This Annual Plan/Five-Year Resource Conservation Business Plan was developed not only to guide the Conservation District, but also to encourage cooperation among landowners, government agencies, private organizations, and elected officials. Through knowledge and cooperation, all concerned can ensure a sustainable natural resource base for present and future generations in the Boundary Soil Conservation District.

This document identifies the resource needs in the Conservation District and presents a resource conservation action plan for meeting these needs.

Certificate of Adoption

The Board of elected supervisors of the Boundary Soil Conservation District this 15th Day of March 2021 do hereby approve the following document known as the Resource Conservation Business Plan. This Plan will be in effect for a five-year period ending June 30, 2026 during which time it will be updated annually and/or amended, as necessary.

As evidence of our adoption and final approval, we do hereby affix our signatures to this document.

__ On File _____ Chairman

__ On File _____ Vice Chairman

__ On File _____ Secretary/Treasurer

__ On File _____ Member



Five-Year Resource Conservation Plan Business Plan (2021 to 2025) Boundary Soil Conservation District

For More Information Contact: Tom Daniel-Chairman, (208) 267-3546



Organization of the Boundary Soil Conservation District

A political subdivision of the State of Idaho – authorities, powers and structure contained in Soil Conservation District Law, Title 22, Chapter 27, Idaho Code

- Organized in 1947 to provide voluntary land and water conservation technical and financial assistance to landowners and uses within the Boundary Soil Conservation District boundaries.

Function of the Boundary Soil Conservation District

To make available to landowners technical, financial, and educational resources, whatever their source, and focus or coordinate them so that they meet the needs of the local land manager with conservation of soil, water and related natural resources.

Who We Serve & Why?

- The people and natural resources in the Boundary Soil Conservation District, to conserve the natural resources for the beneficial and sustainable use by all.

Mission of the Boundary Soil Conservation District

- Establish conservation priorities and resource needs of the county and to work with land managers, local government agencies and other local interests in addressing a broad spectrum of resource concerns.

Values of the Boundary Soil Conservation District

- Sustainable use of natural resources
- Support for agriculture activity that uses sustainable, economically feasible practices
- Value and respect for the Idaho Conservation Partnership
- Conservation education for adults and youth

Natural Resource Priorities and Goals:

The following priorities and goals are examples. Each Conservation District should develop priorities and goals applicable to the natural resource issues in their District. Priorities might include:

- | | |
|---|--|
| <ul style="list-style-type: none">Animal Waste ManagementDistrict OperationsFish and WildlifeInformation and EducationLivestock OperationsNon-irrigated CroplandOrnamental NurseriesPasture/Hay land | <ul style="list-style-type: none">RecreationRiparian/StreambankUrban/Planning & ZoningWater QualityWater ResourcesWoodland Management |
|---|--|

Priorities and goals

1. Reduction of invasive and noxious weeds
 - Invasive and noxious weeds in the Selkirk Cooperative Weed Management area in Boundary SCD will be continually listed by location and degree of problem
 - New invader species will be contained annually with the Selkirk Cooperative Weed Management Partners as well as the county road right-of-ways being kept clean of noxious weeds leading to a reduction in noxious weed species.
2. Soil Quality & Health Production
 - Target landowners and operators in priority erosion areas and encourage participation in EQIP, WHIP and other Farm Bill programs to use conservation measures to improve soil health.
 - Continue to work with landowners or operators to develop and implement conservation plans to reduce erosion on erodible cropland and other land uses.
 - Conduct a Conservation Tree Sale Program annually to encourage landowners to implement conservation and reforestation practices. Explore options for a local seedbank/nursery grower
3. Water Quality & Pest Management
 - Improve water quality within the district through best management practices.
 - Provide and/or determine nutrient management technical assistance for crop and livestock producers.
 - Cooperate with the Kootenai Valley Resource Initiative (KVRI) and administer financial funds for administrative assistance.
 - Coordinate and implement restoration activities on private property through the TMDL committee.
 - Request technical assistance from SWC for help with TMDL issues, planning, implementation and monitoring.
4. Public Outreach
 - Annually sponsor a community wide farm/weed tour in the spring and a forestry tour in the fall educating the community with a target reach of 60 landowners.
 - Annually conduct youth environmental education programs and increase participation in – speech contest, poster contest, seek and sponsor Forestry Contest Team.
 - Annually sponsor a fair booth & Earth Day booth.
5. Forest Planning & Management
 - Reduce wildfire risk
 - Reduce insect and disease mortality
 - Increase wildlife benefits
6. Coordinate with U of I Extension, IDL, & ID Forest Group to provide technical/financial support Ag related business.

Information – Education Priorities and Goals:

- Annually visit all 4th grade students and talk to them about local agriculture and conservation practices.
- Annually visit all 2nd grade students and teach them where their food comes from, specifically wheat and dairy products partnering with Farm Bureau.
- Educate 3rd graders about Arbor Day by visiting all elementary schools and distributing seedling trees to each student and give free trees away to the community members on Earth Day
- Educate students at local schools about Agriculture in our community and where our food comes from while highlighting good stewardship and the importance of soil conservation practices
- Plan an annual Farm tour for local high school students enrolled in Agricultural science classes
- Help with the Idaho State Forestry Contest.
- Help coordinate and sponsor the “Women in Agriculture” seminar
- Cooperate with U of I Extension, Boundary County Weed Control & Public Media to provide educational opportunities for the public.
- Provide information to local groups and organizations on District and NRCS activities.

District Operations Priorities, Goals:

- New supervisors will have completed New Supervisor Training and attend regular scheduled meetings.
- Annually complete effective and efficient operations including accounting, personnel management, training and development, annual planning, and reporting.

- In cooperation with Conservation Districts develop and carry out an effective legislative outreach program to ensure 90% State matching funds for all Districts.
- Conduct Conservation District elections in November of 2022 and 2023.

Location and Physical Characteristics

The Boundary Soil Conservation District is the northern most county of Idaho's Panhandle region. The District is a border between Washington State, Montana State, and British Columbia, Canada to the north. The District is about 881,733 acres in size or 1,278 square miles of land and 10 square miles of water. As of the 2018 census there were 10,972 people, 4,421 households, and 2,976 families residing in the county. *****2020 Census has not yet been finalized for Idaho.*****

Ag Census Statistics- 2018

- 73,500 acres are designated in farmland
- 43,163 cropland and 38,719 harvested croplands
- 373 farms in 2007 vs. 432 farms in 2002
- Harvested Winter Wheat 11,800 ac., Spring Wheat 4,300 ac., Barley 1,800 ac., Dry edible beans 1,100 ac., Alfalfa 9,600 ac., Cattle /calves 5,200 head.

Trends Impacting Conservation in the Boundary Soil Conservation District

- Urban impact on agriculture production
- Poorly planned growth in agricultural areas
- Increase numbers of small acreage parcels
- Burning Management (field & stubble residue)
- Limited availability of State funds for conservation
- Focus on water quality compared to other conservation and environmental issues
- Increased paperwork to getting the job done
- Trend to regulate agriculture and ranching
- Declining crop and Livestock prices

Strategies to Address Trends

- More education but not the usual – more outreach instead of publications/ field trips/ classroom time/ seminars
- Determine opportunities to coordinate outreach activities with traditional and non-traditional partners.
- Raising awareness of conservation values with state legislature and elected officials – help decision makers be better informed
- Strengthen Locally Led efforts on Conservation Practices.
- Supervisors become more informed on current issues impacting working lands, Farm Bill programs, Information from agencies instead of relying on NRCS District Conservationist
- Determine how to become involved with County Planning and Zoning issues impacting natural resources.
- Coordinate conservation plan efforts with local Boundary County weed supervisor for comprehensive weed control
- Host an open house to make public aware of goals
- Solicit input to improve Annual Plan/Five-Year Resource Conservation Business Plan
- Identify the information methods to communicate with small land owners
- Educate landowners for proper forest land management
- Sponsor project proposals with other districts
- Training for Conservation District Supervisors and staff

Staffing Needs

- Full-time Conservation District Administrative Assistant with benefits
- Conservation District Technician

Annual Budget Needs

- The amount needed to carry out the plan of the Boundary Soil Conservation District at this time, not counting grant money for individual projects is \$55,000.00
-

Key Decision Makers

- Citizens of the Boundary Soil Conservation District
 - Boundary County Commissioners and Planning and Zoning Board Members
 - Elected City Officials and Planning and Zoning Board Members
 - State Legislators representing the Conservation District
 - U.S. Senators, Representatives and Staffers
 - Conservation District Supervisors
-

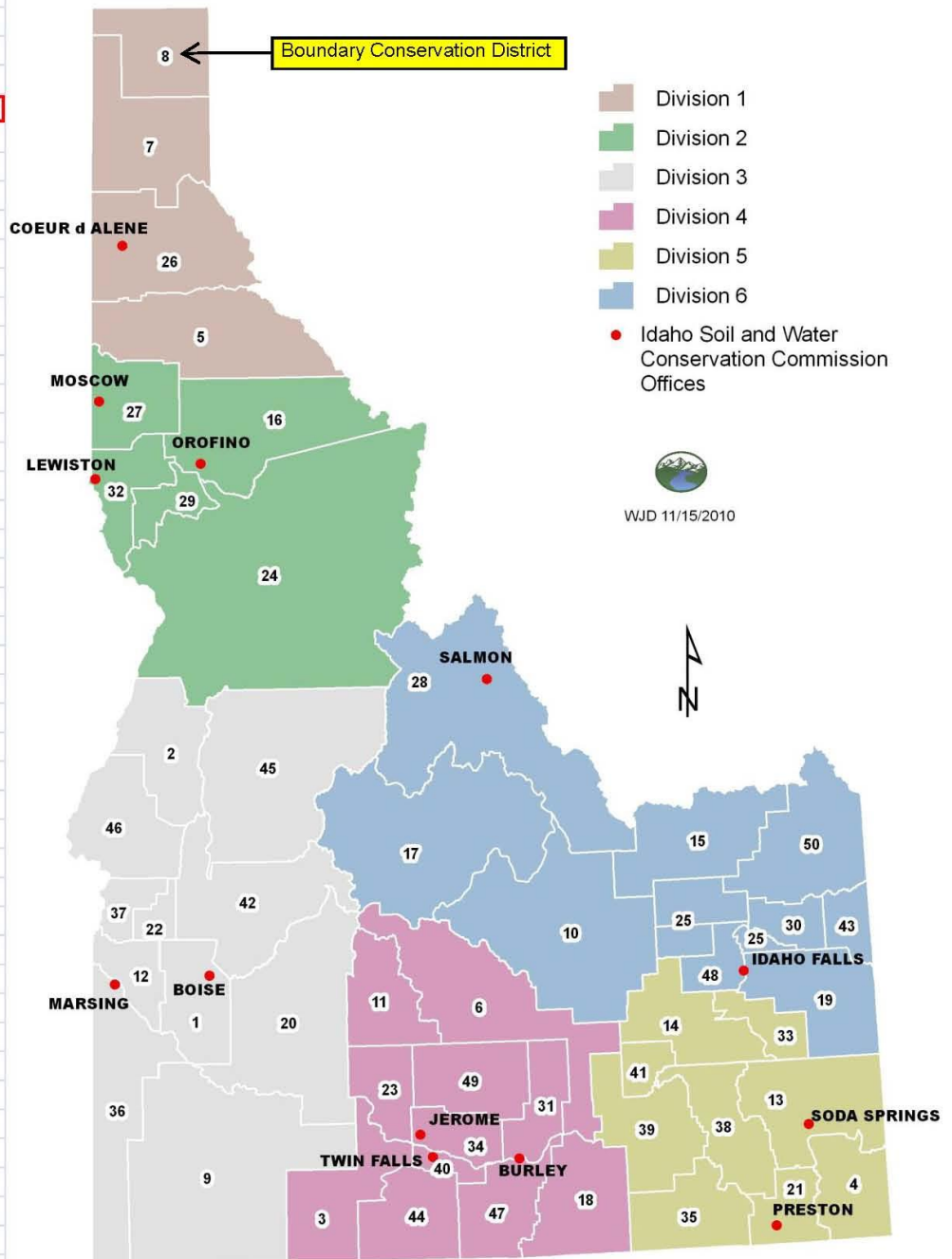
Priority Actions – 6 Months

- Below is a summary of the priority actions needed to start the 5-year plan of the Boundary Soil Conservation District based on the above information.

Action	Begin Date	End Date
▪ Board of Supervisor review of Annual Plan/Five-Year Resource Conservation Business Plan priorities, actions, and public comment	01/21	03/21
▪ Adopt and submit Annual Plan/Five-Year Resource Conservation Business Plan	03/21	03/21
▪ Meet with Bo. County schools for educational programs and set dates for 2021-22	05/21	10/21
▪ Meet with Farm Bureau on Community Farm Tour Plans	01/21	04/21
▪ Meet with County Commissioners for funding, start preparing budget	03/21	04/21
▪ Meet with FFA students to promote educational opportunities	01/21	06/21

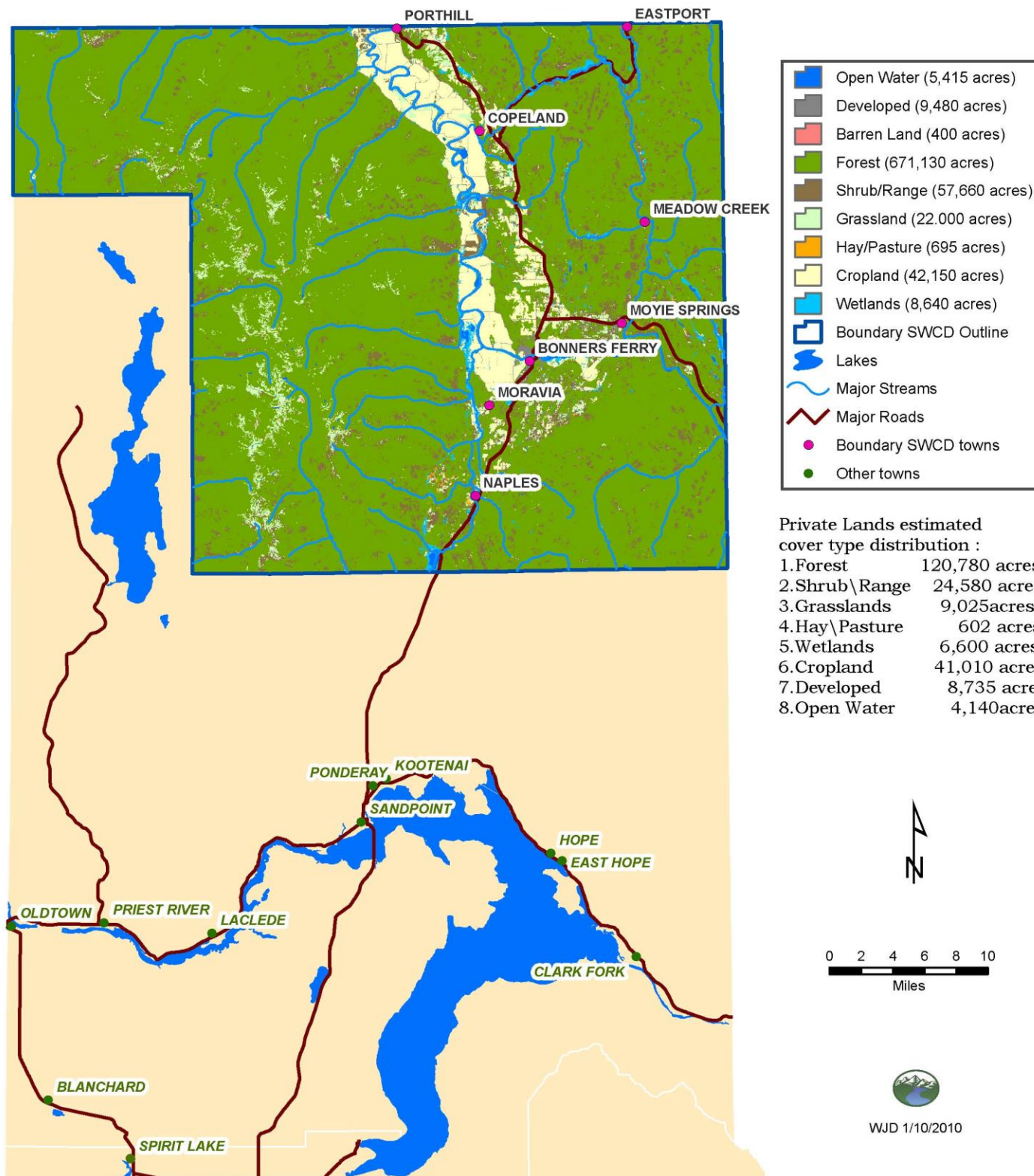
1	Ada
2	Adams
3	Balanced Rock
4	Bear Lake
5	Benewah
6	Blaine
7	Bonner
8	Boundary
9	Bruneau River
10	Butte
11	Camas
12	Canyon
13	Caribou
14	Central Bingham
15	Clark
16	Clearwater
17	Custer
18	East Cassia
19	East Side
20	Elmore
21	Franklin
22	Gem
23	Gooding
24	Idaho
25	Jefferson
26	Kootenai-Shoshone
27	Latah
28	Lemhi
29	Lewis
30	Madison
31	Minidoka
32	Nez Perce
33	North Bingham
34	North Side
35	Oneida
36	Owyhee
37	Payette
38	Portneuf
39	Power
40	Snake River
41	South Bingham
42	Squaw Creek
43	Teton
44	Twin Falls
45	Valley
46	Weiser River
47	West Cassia
48	West Side
49	Wood River
50	Yellowstone

Districts by IASCD Divisions 2010



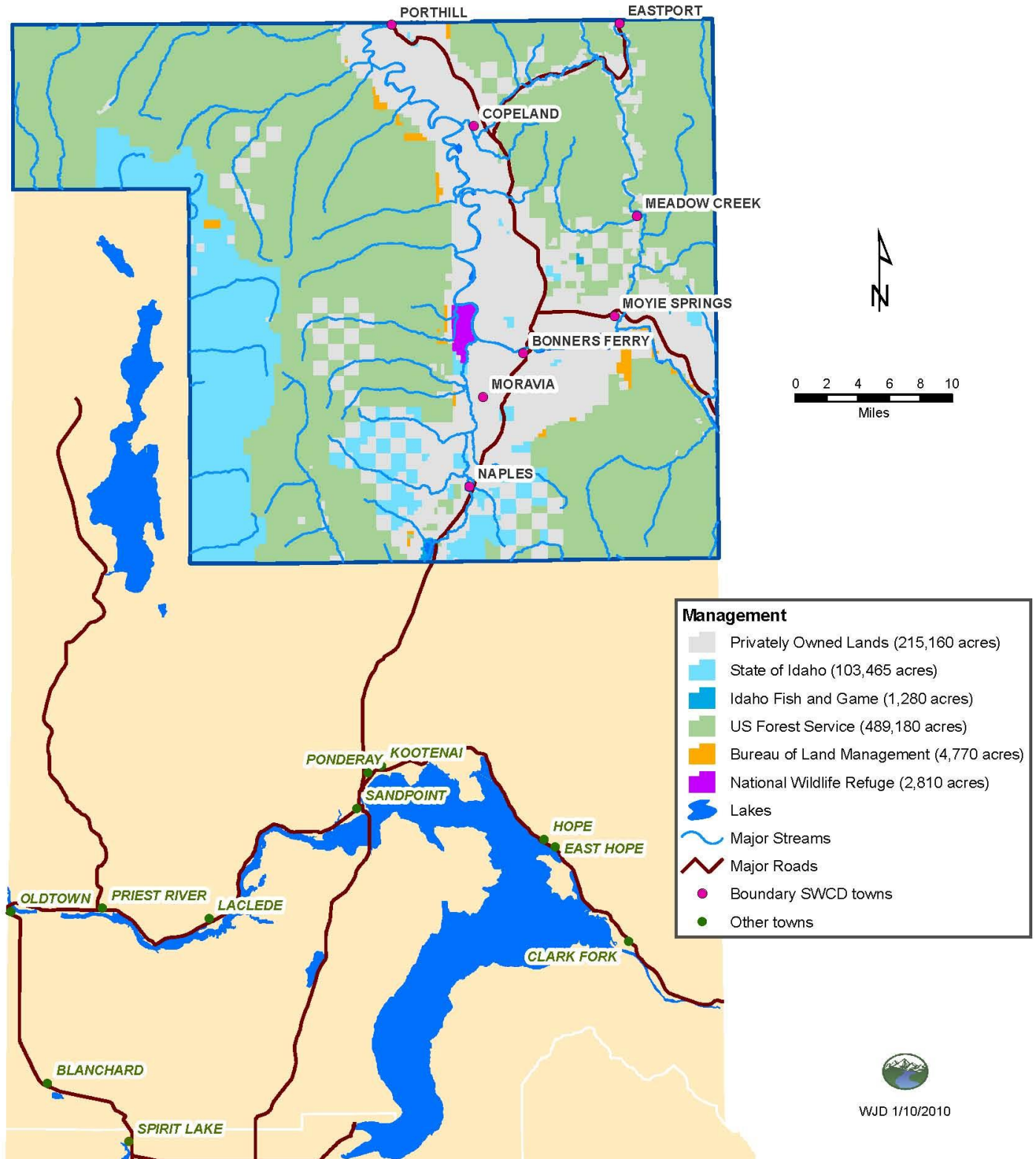
Boundary Conservation District Land Cover Map

Derived from National Land Cover
Data 2001 dataset



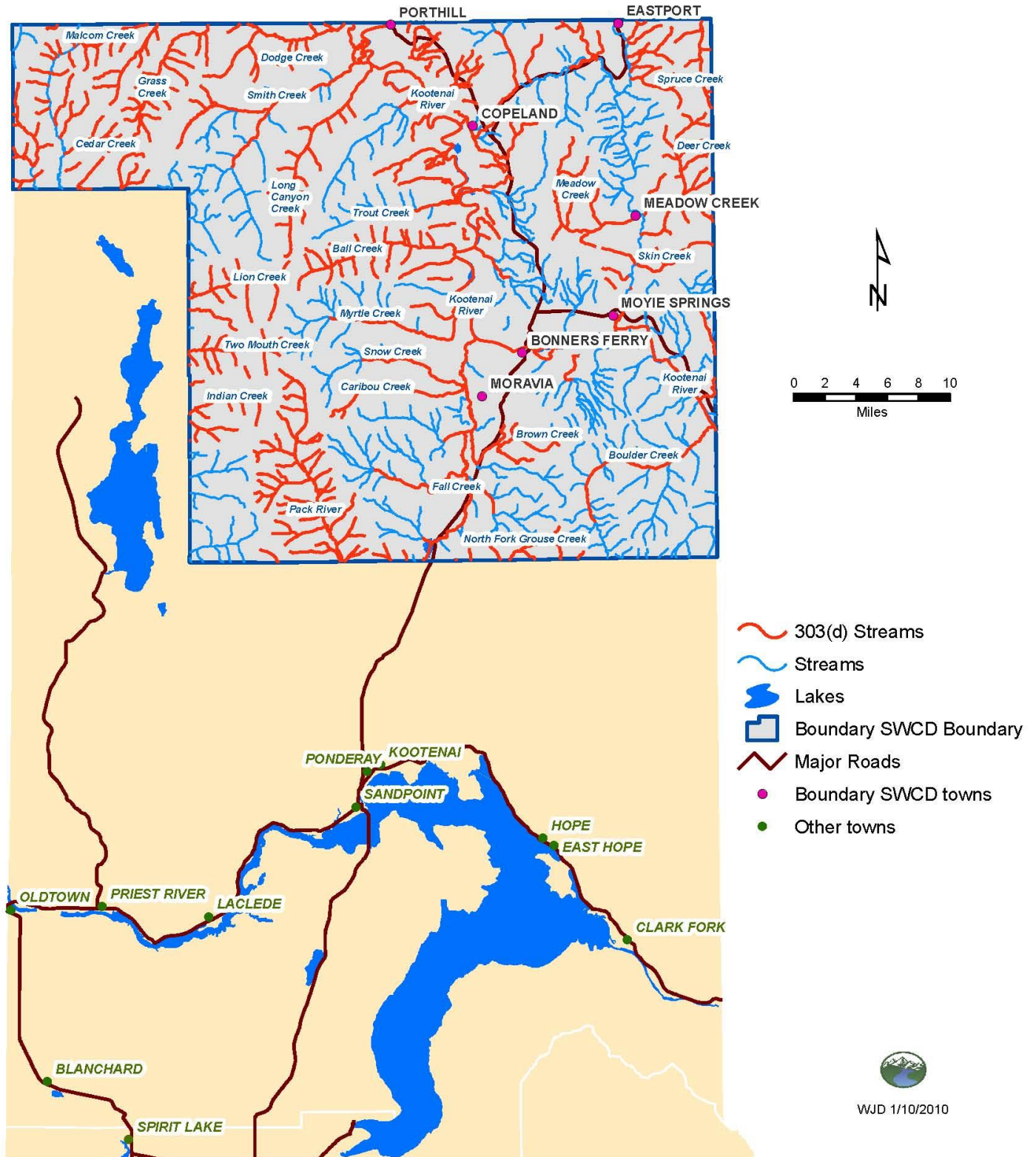
Boundary Conservation District Land Status Map

Based on BLM Data



Boundary Conservation District Water Quality Limited Stream Segments

Derived From DEQ 2008 303(d) streams list
Complete List of Streams provided in Plan text



Water Quality Component

http://www.deq.idaho.gov/water/data_reports/surface_water/tmdls/sba_tmdl_master_list.cfm

The summaries from DEQ's website are presented below:

Surface Water: Kootenai River and Moyie River Subbasin Assessments and Total Maximum Daily Loads

> [Link to document](#)

The Sub basin at a Glance

Hydrologic Unit Codes	17010101, 17010104, 17010105
Size	1,007 square miles (Kootenai River Basin in Idaho)
§303(d) Listed Stream Segments	Blue Joe Creek, Boulder Creek, Boundary Creek, Caribou Creek, Cow Creek, Deep Creek, Moyie River
Beneficial Uses Affected	Cold water aquatic life, salmonid spawning
Pollutants of Concern	Sediment, metals, pH, temperature
Major Land Uses	Timber harvest, recreation, designated wilderness, mineral extraction, dry land agriculture, rangeland
Date Approved by U.S. EPA	January 2007 > View Approval Letter

Background

The federal Clean Water Act requires that states and tribes restore and maintain the chemical, physical, and biological integrity of the nation's waters. States and tribes must adopt water quality standards necessary to protect fish, shellfish, and wildlife while providing for recreation in and on the waters whenever possible.

Section 303(d) of the Clean Water Act establishes requirements for states and tribes to identify and prioritize water bodies that are water quality limited (i.e., water bodies that do not meet water quality standards). States and tribes must periodically publish a priority list of impaired waters, currently every two years. For waters identified on this list, states and tribes must develop water quality improvement plans known as total maximum daily loads (TMDLs) that establish allowable pollutant loads set at levels to achieve water quality standards.

The Kootenai and Moyie rivers subbasin assessment (SBA) and TMDL were developed using the 1998 §303(d) list. The Kootenai River itself was not §303(d) listed.

Overview

The Lower Kootenai and Moyie watersheds remained in a relatively natural condition until the early twentieth century when miners, loggers, and ranchers began to settle in the area. In recent years, timber harvest and grazing have been restricted to the floodplain of the lower portion of the Kootenai River.

Excessive sediment in the sub basin comes primarily from road crossings and encroachment. Temperature is most affected by stream shading. Metals and pH exceedances stem from historic mining activity near the headwaters of Blue Joe Creek.

Water temperatures are an issue in the Lower Kootenai and Moyie Sub basins. An SBA and TMDL for water temperatures was developed in 2005; however, before the temperature SBA/TMDL was completed, the Kootenai and Moyie River Basin Watershed Advisory Group suggested it be incorporated into this TMDL.

An assessment of temperature data in 2002 indicates that all monitored streams in the Lower Kootenai and Moyie Sub basins exceed Idaho temperature criteria. In a situation where all streams, including undisturbed streams, have numeric criteria exceedances, a special look at natural conditions must be taken into account. The Lower Kootenai and Moyie watersheds are located in the northern-most portion of Idaho at relatively low elevations. Throughout the state it has been demonstrated that water temperatures are most strongly affected by air temperatures, which directly relate to elevation.

Metals and pH are identified as pollutants for Blue Joe Creek. At the time of the initial 1998 assessment, Blue Joe Creek was void of aquatic insect life and was impaired. The source of metals and associated pH issues is the now abandoned Continental Mine. Through environmental cleanup activities, both DEQ and the USDA Forest Service have been working to reduce metals and pH loading over the last three years. All reasonable TMDL implementation activities for metals and pH loading are complete, and Blue Joe Creek is in a state of recovery. Therefore, TMDLs for metals and pH for Blue Joe Creek were not developed.

The 1998 §303(d) list includes the Moyie River, from the Moyie River Dam to its confluence with the Kootenai River. Excess sediment is the listed pollutant, and based on the 1998 determination, a TMDL would be required. DEQ does not have Beneficial Use Reconnaissance (BURP) monitoring data on this section of Moyie River, and believes the sediment listing decision was based on anecdotal understandings and information. DEQ has evidence that the listing resulted from a single fine sediment deposition event and that the stream has recovered since that event. DEQ recommends removing the Moyie River from the §303(d) list and therefore did not develop a TMDL for this river.

Blue Joe Creek, Boulder Creek, and Caribou Creek have also been removed as candidates for sediment TMDL development for the following reasons:

- Draft TMDLs demonstrated that current sediment generating conditions are better than those showing full support of the beneficial uses.
- The listings were based on 1995 BURP data that are contrary to data collected more recently.
- Stressor Identification Analysis (EPA 2000) performed by DEQ supports removal of these three streams as TMDL candidates.

Streams and Pollutants for Which TMDLs Were Developed

Boundary Creek	Temperature
Cow Creek	Sediment
Deep Creek	Temperature, sediment



FY-2021 (7/1/21 – 6/30/22) Annual Plan of Work Boundary Soil Conservation District

**For Information Contact: Tom Daniel - Chairman
(208) 267-3340 ext. 107**

Email: cassie.olson@id.nacdnet.net

County Served: Boundary



Mission of the Boundary Soil Conservation District:

- Establish conservation priorities and resource needs of the county and to work with land managers, local government agencies and other local interests in addressing a broad spectrum of resource concerns.

Trends Impacting Conservation in the Boundary Soil Conservation District:

- Urban Development
- Big Game Decimation of Cropland and Winter Feed Storage
- Water Flows (Libby Dam Operations/Columbia River Treaty)
- Aging Field Pumps & Dike Deterioration
- Additional TMDL streams listed
- Water Quality, Winter Feedlots
- Fuel Buildup- Wildfire Risk

Projects Planned, Coordinated or Managed:

- County Resource Inventory for Future Projects
- Panhandle Seedling Program
- Coordination with Boundary County Schools for education in the elementary and high school levels

Funding Sources & Opportunities for District Operations and Projects Coordinated:

- Boundary County
 - State of Idaho
 - Farm Bureau
 - Grants
 - Annual Tree Seedling Sale
-





FY-2021 (7/1/21– 6/30/22) Annual Plan of Work Boundary Soil Conservation District

Conservation District Priority 1: District Operations

Objective: Increase public awareness of the District and available programs

Goal(s): Increase effectiveness of district board and awareness of district operations and programs.

Actions	Target Date	Individual(s) Responsible
Schedule and hold at least 11 board meetings, attend spring, and fall Division I meetings and annual conference. Partnerships with The Kootenai Tribe, Idaho Dept. Of Lands, IDFG, The Kootenai Valley Wildlife Refuge, KVRRI, Boundary County Road and Bridge, SWCC, FSA, Drainage Districts, Air Quality Advisory Group, DEQ	On-going	Chairman Tom Daniel, Cassie Olson, All Supervisors, NRCS, ISWCC
Develop and submit conservation district annual plans of work / revised five-year plans and letters of intent, performance reports, match reports and financial reviews to the state commission.	When Due	All Supervisors, Cassie Olson
Continued awareness through PowerPoint presentations, news articles, website, displays, fair booth, and pamphlets. Host an annual community farm tour. Partner with U of I extension and IDL for put on a community wide Arbor day celebration. Help at the State Forestry Contest. Educate 2 nd grade on “Where your food comes from” Hold a 4 th grade Agricultural Day, sponsor “Women in Ag”, cereal school, educate community on water quality and recycling	On Going	Supervisors, Cassie Olson, Dave Wenk, Farm Bureau
Organize a field trip with the Boundary School District Ag Department (Ag Industry Day) to bring education to FFA students and Ag Science students by visiting local farm operations.	Spring 2022	Cassie Olson
Outreach/Education including meeting with County Commissioners, Federal, State & Local Legislators, deliver a display to Boise during Legislative Days in the State Capitol, work w/ local Ag teacher for a Forestry contest team, Water Days Elementary School Outdoor Classroom, I & E at the Kootenai Wildlife Refuge, Animal Tracks Presentations.	Quarterly/ Annually	Tom Daniel, Ken Irons, Cassie Olson, Tim Dillin



FY-2021 (7/1/21 – 6/30/22) Annual Plan of Work Boundary Soil Conservation District



Conservation District Priority 2: Degraded Plant Condition

Objective: Improve overall soil quality & health for cropland producers

Goal(s): Assist cropland land managers/owners to improve soil quality and enhance crop production

Actions	Target Date	Individual(s) Responsible
Develop cropland conservation plans utilizing basic nutrient and mulch tillage systems on new dry cropland acres and new participants on 1,000 acres.	On going	District board, Ken Roberts,
Facilitate workshops on depredation, cover crops, seasonal high tunnels, and the new CSP	Spring 2022	Supervisors, Cassie Olson, U of I Extension
Filter & buffer strips and field borders along water courses, drain ditches within the Kootenai River floodplain areas. Utilize Farm bill, EQIP, CRP, and IDFG program funding to increase participation.	On going	Supervisors, NRCS, IDFG, Kootenai Tribe
Implement Integrated pest management on 2,000 acres. Identify pollinator habitat areas on 10 acres within the Kootenai Valley.	On going	Supervisors, NRCS, Dave Wenk



FY-2021 (7/1/21 – 6/30/22) Annual Plan of Work Boundary Soil Conservation District



Conservation District Priority 3: Soil Quality Limitation

Objective: Improve overall soil quality for cropland producers

Goal(s): Assist cropland land managers/owners to improve soil quality, reduce potential sheet and rill erosion and enhance crop production

Actions	Target Date	Individual(s) Responsible
Develop Conservation plans on 2500 acres with tillage practices on dry cropland.	Spring 2022	District Board, NRCS, ISWCC
Scope and develop 319 projects for FY 2022 proposals/resource inventory	On-going	District, NRCS, County Road & Bridge, ISWCC
Follow-up with landowners for soil testing for comprehensive nutrient management plan	On-going	District, NRCS
Soil Health information and workshop planning. Fair Booth information on healthy soil practices.	On-going	District, NRCS, U of I Extension
Update Resource Guide for landowners	April 2022	District, NRCS, IDFG, IDL, KVRI



FY-2021 (7/1/21 – 6/30/22) Annual Plan of Work Boundary Soil Conservation District



Conservation District Priority 4: Livestock Production Limitation

Objective: Implement pasture and hay land plantings and management

Goal(s): Improve forage quality and quantity with improved plant material varieties.

Actions	Target Date	Individual(s) Responsible
Develop IPM plans on pasture and hay land landowners. I & E Pesticides/ calendar	On-going	Supervisors, Dave Wenk, NRCS
Develop grazing systems in the riparian zone of key watersheds with EQIP & CSP participants.	On-going Spring 2022	NRCS, District Board
Improve forage quality and quantity on 200 acres of improved pasture & hay land plantings. Implement new grazing plans	On-going	NRCS, District Board, IDFG
Continued work on alternative water sources to reduce grazing pressures within riparian areas within the Lower Kootenai TMDL Watershed.	On-going	NRCS, District Board, ISWCC
Educate about AFO/CAFO Projects with landowners.	On going Spring 2022	District Board, NRCS



FY-2021 (7/1/21 – 6/30/22) Annual Plan of Work Boundary Soil Conservation District



Conservation District Priority 5: Inadequate Habitat

Objective: Improve wildlife resources to enhance recreational opportunities within the county and to develop forage and grain food plots for wildlife.

Goal(s): Improve wildlife habitat with private landowners on forestland, cropland and pastureland.

Actions	Target Date	Individual(s) Responsible
Accelerate permanent cover plantings along the Kootenai Valley drain ditches and valley tributary and slough areas compatible with farm operations.	On-going	District Board, NRCS, IDFG, FSA
Fence out corridors on TMDL streams to reduce impacts by livestock.	On-going	District Board, NRCS,
Continuation of Implementation of wetland forest plantings. Improve water management on Ball Creek WRP.	On-going	District, NRCS, The Nature Conservancy, Duck's Unlimited
Assist in completing WRPO's and CUA's for Boundary/Smith Creek WRP and remaining WRP's as needed	Summer/19	District, Greg Becker, Kevin Traylor, Landowners



FY-2021 (7/1/21 – 6/30/22) Annual Plan of Work Boundary Soil Conservation District



Conservation District Priority 6: Woodland

Objective: Implement woodland improvement practices to improve overall productivity.

Goal(s): Assist forest landowners/managers to complete Forest Management plans

Actions	Target Date	Person(s) Responsible
Continue to grow locally sourced seeds with the Panhandle Seedling Program. PSP will hold a workshop and provide information at the local fair educating about Forest health and promote local tree sales.	On-going	District supervisors, Cassie Olson, Panhandle Seedling Board
Encourage cost-share participation for Biomass and Fire-Hazard to improve condition. 1,000 acres of enhancement area planned and completed. Complete FMP's.	On-going	IDL, District Board, NRCS, IFM
Pre-commercial thinning and reforestation including the use of the tree seedling sale. Implement 200 acres of pre-commercial thinning practices to reduce fuel loads and improve forest health.	On-going	District supervisors, Cassie Olson, NRCS IDL,
EQIP tree planting with forest landowners on 2000 acres. Complete conservation planning on 2,000 acres of forestland through completion of EQIP and CSP programs.	On-going	IDL, District Board, NRCS, Inland Forest Mgt, Panhandle Seedling Program
News release, workshop, and tours for Best Management Practices on forestland with landowners. Utilize NRCS public affairs assistance.	On-going	Supervisors, Cassie Olson, NRCS, IDL
Work with IDL staff to promote forest stewardship plans on woodlots with tax exemptions	On-going	District, NRCS, IDL, Idaho Forest Group

**IDAHO SOIL & WATER
CONSERVATION COMMISSION**

**FIVE-YEAR (5) PLAN and
ANNUAL WORK PLAN
CERTIFICATION**

DISTRICT: **Boundary**

Project or Activity Name: **General**

FOR FISCAL YEAR: **2022**

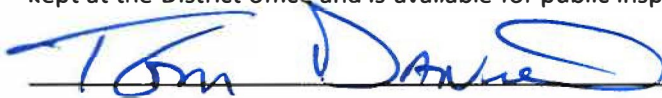
Hours of Assistance Requested:
75/40

Due: **March 31, 2021**

CERTIFICATION

By concurrence of a majority of the supervisors of the district board and the above name conservation district certifies that attached Request for Assistance is true and accurate, and further submits said Report for the above named District and fiscal year.

A copy of this Request for Assistance and supporting documents shall be kept at the District office and is available for public inspection.



Board Supervisor Signature

Tom Daniel

Printed Name

3/15/2021

Date

208.267.3340 x 107

District Telephone

cassie.olson@id.nacdnet.net

District Email Address

FOR SWC USE ONLY:

DATE OF CONFIRMATION: