

Latah Soil and Water Conservation District 2018 Fact Sheet

General Information

The Latah Soil and Water Conservation District was organized in 1940. The District works through non-regulatory mechanisms to identify conservation practices that are beneficial to resource conservation objectives of the landowner and the public.

Mission

Lead local efforts to promote stewardship of natural resources through development of comprehensive plans/implementation strategies for economic and ecological sustainability through coordination of leadership, information and funding.

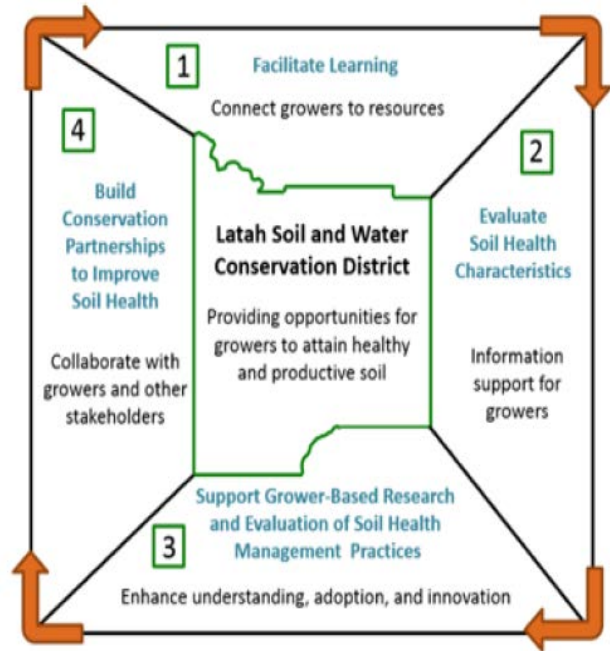
Location

Latah County, on the west side of the Panhandle.

Legislative District 5

FY 2018 Accomplishments

- Implemented new Soil Health Program.
- Implemented meadow restoration projects on private lands in the Big Bear Creek watershed; 13 projects have been installed. Funding was secured by the District from BPA and the Office of Species Conservation.
- Coordinated annual Conservation Awareness Day for over 300 local student participants.
- District field crews continue to construct Beaver Dam Analogs on private and public lands.
- Expanded Palouse Prairie restoration projects on private lands throughout Latah County.



New Soil Health Program designed to foster innovation

FY 2018 Funds

State	\$ 37,975
Local Governments	\$ 18,000
Bonneville Power Administration	\$ 1,064,943
Idaho DEQ	\$ 199,233
Office of Species Conservation	\$ 420,764
US Fish and Wildlife Service	\$ 37,399
USDA NRCS	\$ 17,359
U of Idaho/WSU	\$ 3,997
Foster Creek SCD	\$ 300
Miscellaneous	\$ 1,881
Total	\$ 1,801,851

Latah SWCD
220 E 5th St Room 208
Moscow ID 83843
District Manager: Ken Stinson

Chair: Dave Huggins
208.301.5090
www.latahswcd.org
kstinson@latahswcd.org