

**FRANKLIN SOIL & WATER CONSERVATION  
DISTRICT  
98 EAST 800 NORTH STE. #5  
PRESTON, IDAHO 83263**

**ANNUAL PLAN**

**FIVE-YEAR RESOURCE CONSERVATION  
ANTIDEGRADATION PLAN**



**JULY 1, 2021 – JUNE 30, 2026**

## **Executive Summary**

The Franklin Soil and Water Conservation District is one of 50 Conservation Districts in Idaho. Idaho Soil and Water Conservation Districts are political subdivisions of State government. Conservation districts, under Idaho State Law, Title 22, Chapter 27 are charged with facilitation cooperation and agreements between agencies, landowners, and others; developing comprehensive conservation plans; and bringing those plans to the attention of landowners and others in their District. Programs are non-regulatory, providing science-based technical assistance, incentive-based financial programs, and informational and educational programs at the local level. It is the goal of the Franklin Soil & Water Conservation District elected supervisors to set high standards for the wise use of the natural resources in the district. This document identifies local conservation objectives; develops plans with clear measurable goals, establishes actions to ensure implementation; and monitors programs and projects effectiveness.

### **Function of the Franklin Soil & Water Conservation District**

To make available technical, financial and educational resources, whatever their source, and focus or coordinate them so that they meet the needs of the local land manager with conservation of soil, water and related natural resources.

### **Mission of the Franklin Soil & Water Conservation District**

To support high quality and effective projects that engage private landowners in the conservation and enhancement of wildlife and natural resources on their lands. We place high priority on innovative concepts that integrate conservation practices in ongoing agricultural and ranching operations.

### **Values of the Franklin Soil & Water Conservation District**

- Encourage a complete ecosystem approach that uses sustainable, economic feasible practices to all land users including agricultural, urban, and recreation.
- Value and respect for the Idaho Conservation Partnership
- Conservation education for adults and youth

### **Natural Resource Priorities and Goals:**

To help and maintain the chemical, physical, and biological integrity of Franklin County waters to meet the clean water act. Develop, restore, and maintain existing natural resources and improve forage and water use on public and private lands. Reduce soil erosion, noxious weeds, and increase crop quality and quantity by promoting improved soil structure, better water management, and improved crop varieties. Support the development and use of alternative energy and biofuels produced from agriculture and forestry products and the use of conservation programs to reduce energy inputs.

### **Information – Education Priorities and Goals:**

Education of youth, Cooperators, landowners and/or land users – emphasizing the importance of maintaining and improving natural resources and all conservation concerns.

### **District Operations Priorities, Goals:**

Encourage and develop well-balance positive district leadership. Ensure fiscally responsible operations including accounting, personnel management, training and development, annual planning and reporting. In cooperation with Conservation Districts develop and carry out an effective legislative outreach program to ensure 90% State matching funds for all Districts.

## **Trends Impacting Conservation in the Franklin Soil & Water Conservation District**

- Limited availability of State funds for conservation
- Focus on water quality compared to other conservation and environmental issues
- Conservation improvements without dedicated money for technical assistance
- Trend to regulate agriculture and ranching
- Urban impact from the poorly planned growth on natural resources
- Increasing small acreage farms, five acres or less
- Ability to adequately measure irrigation water

## **Staffing Needs**

- Conservation District Manager with benefits
- Full-time Conservation District Administrative Assistant with benefits
- Conservation District Technician with benefits
- ½ Conservation District Engineer shared with Bear Lake

## **Annual Staffing Budget Needs**

The annual staffing budget of \$172,000 is needed to carry out the plan of the Franklin Soil & Water Conservation District based on the above information.

## **Key Decision Makers**

- Citizens in Conservation District
- Franklin County Commissioners, Robert Swainston, Boyd Burbank, and Dirk Bowles
- Planning and Zoning Board Members
- Official cities: Franklin, Preston, Weston, Dayton, and Clifton
- Mark Harris – Senate, Marc Gibbs – House Seat A, Chad Christensen – House Seat B
- Senator James E. Risch, Senator Mike Crapo, Congressman Mike Simpson (2<sup>nd</sup> District)
- Chamber of Commerce
- Special Interest Groups

Partners in Conservation: working together to help people conserve and protect Idaho's natural resources. Over the past 60 years, soil conservation districts, the Idaho Soil Conservation Commission, and the Natural Resources Conservation Service have forged what is widely-recognized as a unique and effective local, state, and federal partnership. We all have "conservation" in our names and we often share the same office.

The Natural Resources Conservation Service is a Federal agency in the U.S. Department of Agriculture. Both by legislation and by agreement between USDA and the states, NRCS provides technical services, through conservation districts, to people who live and work on the land.

The Idaho Soil & Water Commission is a state agency. The Commission provides support and services to Idaho's 50 conservation districts and represents state government in matters affecting natural resources conservation on private lands.

This Annual Plan/Five-Year Resource Conservation Antidegradation Plan was developed not only to guide the Conservation District, but also to encourage cooperation among landowners, government agencies, private organizations, and elected officials. Through knowledge and cooperation, all concerned can ensure a sustainable natural resource base for present and future generations in the Franklin Soil and Water Conservation District.

The Board of elected supervisors of the Franklin Soil and Water Conservation District this 29th day of March 2021, do hereby approve the following document known as the Resource Conservation Antidegradation Plan. This Plan will be in effect for a five-year period ending June 30, 2026, during which time it will be updated annually and/or amended, as necessary.

As evidence of our adoption and final approval, we do hereby affix our signatures to this document.

**Franklin Soil & Water Conservation District Board of Supervisors**

_____	Chairman
_____	Vice Chairman
_____	Secretary/Treasurer
_____	Supervisor
_____	Supervisor

**Franklin Soil & Water Conservation District Staff**

Chris Hatch	Admin. Assistant/Education Coordinator
	Administrative Coordinator
	Conservation Technician
Lyle Porter	Project Manager
Mark Bennett, P.E.	Contract Engineer

**Franklin Soil & Water Conservation Partners**

Boyd Bradford	Natural Resources Conservation Service
George Hitz	Soil & Water Conservation Commission
Robert Swainston	Franklin County Commissioner
	Pheasants Forever

## Table of Contents

Section 1—Conservation District Structure, Governing Policies, and Physical Characteristics of the District .....	6
Section 2- Economic and Resource Conditions, Trends, Needs and Outlook for the District .....	12
Section 3--Assessment.....	14
Section 4—Water Quality Component .....	22
Section 5—Identify and Prioritization of Objectives .....	24
Section 6—Identify and Prioritize Projects.....	29
Section 7—Calendar of Events .....	31
Section 8-- Implementation.....	33

## **Section 1—Conservation District Structure, Governing Policies, and Physical Characteristics of the District**

### **Legal Identity and Enabling Legislation**

Conservation districts, under Idaho State Law, Title 22, Chapter 27 are charged with facilitation cooperation and agreements between agencies, landowners, and others; developing comprehensive conservation plans; and bringing those plans to the attention of landowners and others in their District. Thus, Conservation district are experienced in assessing resource needs, determining priorities, and coordinating programs to meet the needs and priorities

### **History and Purpose**

Although only twenty-five names were required for a petition to form a soil conservation district, 337 people signed a petition in 1947 to form the Franklin Soil Conservation District (SCD). Why landowners and operators were so interested in forming a district became clear at a public hearing held August 9, 1947: People needed technical help to stop gullies that were cutting across their land, to repair areas buried in sand by the latest flood, to stop the depletion of native pasture, to conserve water, and to control noxious weeds. On October 13, 120 people cast favorable votes to form the Franklin Soil Conservation District. On December 19, 1947, the new district was formally organized.

J.H. Choules, from Clifton, served as the first chairman of the Franklin SCD. Serving with him were A.W. Stevenson, from Weston; and George Crockett, Wells McEntire, and Frank Gilbert, from Preston.

At its first meeting, three requests for assistance were presented to the new SCD--two drainage projects and a deep gully erosion problem. By October 1948, the board received 17 applications for assistance and by November, 45 applications.

In December 1949, a young man named Norman A. Berg was assigned by the Soil Conservation Service to work with the Franklin SCD. Berg served as District Conservationist for six months and continued to support Franklin SCD programs for several years afterwards. Berg went onto head the Soil Conservation Service in Washington, D.C.

The original Franklin SCD included the southern three-quarters of Franklin County. In 1970, the SCD's boundaries were changed to include all of Franklin county.

From its beginning, the Franklin SCD has worked to control erosion and conserve water by offering engineering and technical help to progressive farmers and ranchers. Initially, the SCD purchased heavy equipment that it rented to landowners to install conservation practices. The Franklin SWCD has also served as a center for information about soil moisture, water forecasts, soil classifications, and other information needed for maximum crop and forage production and resource conservation.

The SCD has been instrumental in helping farmers design and incorporate sprinkler irrigation into their farm plans. The district introduced terraces, which have become a popular method of holding soil and water in place on dryland farms. Extensive land leveling has enabled many farmers to better irrigate and cultivate their land. The SCD also helped farmers install drains to reclaim farm ground.

Water conservation has always been a concern of landowners in the Franklin SCD. In December 1989, the Franklin SCD changed its name to the Franklin Soil & Water Conservation District (SWCD). The Franklin district includes 14 major reservoirs; it was felt that the name needed to reflect the board's emphasis on water and its water conservation projects.

Technical assistance and conservation information are still vital parts of the Franklin SWCD's program. Today, modern conservation techniques and advancements in engineering have improved all phases of conservation. The Franklin SWCD is committed to bringing these advancements to its cooperators.

### **Administration and Operation**

The Franklin Soil & Water Conservation District is a legal subdivision of Idaho State government. The District board consists of five supervisors and associate members. The five supervisors are elected during the general county election and each serves a staggered four-year term. The board meets in an open meeting, the first Wednesday of each month at 7:00 p.m. This meeting is held at the district office, 98 East 800 North, Preston, Idaho. Special meetings, subject to open meeting policy, are called as needed.

Funding for district operations comes from the State of Idaho, Franklin County, and monies earned. The state of Idaho, subject to legislature approval is authorized to match the local funds provided to the district at a two-to-one ratio. Standard accounting procedures are used in the day-to-day operation of financial affairs. One of the five elected supervisor serves as Secretary-Treasurer.

The Franklin SWCD Resource Conservation Business Plan exemplifies Locally Led Conservation., It is based on the principle that community stakeholders are best suited to deal with natural resources problems. We have blended the USDA Local Working Group (LWG) into our prioritization of natural resource concerns. This group consists of a diverse assortment of community stakeholders that are best suited to identify and resolve local natural resource problems. It is the task of this group to identify the resource concerns for Franklin County. They prioritized these concerns into the top 5 based on the probability of landowner acceptance without regard to program specifics.

### **Policies**

Requests for technical assistance will be granted to both cooperators and non-cooperators. However, landowners requesting assistance will be strongly encouraged to become cooperators with the district. An individual or group must own or operator land within the district boundaries in order to become a cooperator with Franklin SWCD.

It is the policy of the district to continue to carry out an active information and education program, which will include news releases, conservation tours, school and civic presentations, periodic newsletters, landowner educational seminars, an annual fifth grade poster contest, and an annual eighth grade water fair.

The district will actively support the National Association of Conservation Districts the Pacific Regional Association of Conservation Districts, and the Idaho Association of Soil Conservation Districts as a means of strengthening the soil and water conservation movement regionally, nationally, and in Idaho. The district will continue to look to the Idaho Soil Conservation Commission for leadership and direction.

## EQUAL EMPLOYMENT OPPORTUNITY STATEMENT

All Soil & Water Conservation District programs and services are offered on a non-discriminatory basis without regard to race, color, nation origin, religion, sex, age, marital status, or handicap.

## OPEN MEETING LAW

The Franklin Soil & Water Conservation District follows open meeting law by giving public notice of any meeting. Agenda with date, time, and place meeting is to be held is posted 2 days prior to the meeting. When the FSWCD board of supervisors evaluates and updates the annual work plan and the five-year resource conservation plan, they give public notice for public input on future programs.

## IDAHO PUBLIC RECORDS LAW

The Franklin Soil & Water Conservation District follows the Idaho Public Record Law. This law is reference in Idaho Code §§74-201 through 74-208. All requests for information must be provided in writing. Individuals always have access to their own records.

## District Partners

Partners in Conservation: working together to help people conserve and protect Idaho's natural resources. Over the past 60 years, soil conservation districts, the Idaho Soil Conservation Commission, and the Natural Resources Conservation Service have forged what is widely-recognized as a unique and effective local, state, and federal partnership. We all have "conservation" in our names. We often share the same office. So what's the difference?

Soil and Water Conservation Districts are unique units of local government, established under state law and organized by local citizens. Each district is managed by a board of supervisors elected by local residents. Districts coordinate and use state, federal, and private sector resources to address local conservation issues.

The Idaho Soil & Water Conservation Commission is a state agency. The Commission provides support and services to Idaho's 51 conservation districts and represents state government in matters affecting natural resources conservation on private lands.

The Natural Resources Conservation Service is a Federal agency in the U.S. Department of Agriculture. Both by legislation and by agreement between USDA and the states, NRCS provides technical services, through conservation districts, to people who live and work on the land.



In addition, the Franklin Soil & Water Conservation District will partner with any entity whose mission, goals and objectives align itself with ours. District leadership will gather together any and all resources to increase the visibility and effectiveness of local conservation efforts.

### **Physical Characteristics**

#### **LAND:**

The total land area of Franklin County is 425,920 acres. In addition, there is a total water area of 3,200 acres, making the total surface area of Franklin SWCD 429,120 acres. Approximately 58% of the land area is used for agriculture.

#### **Land Use**

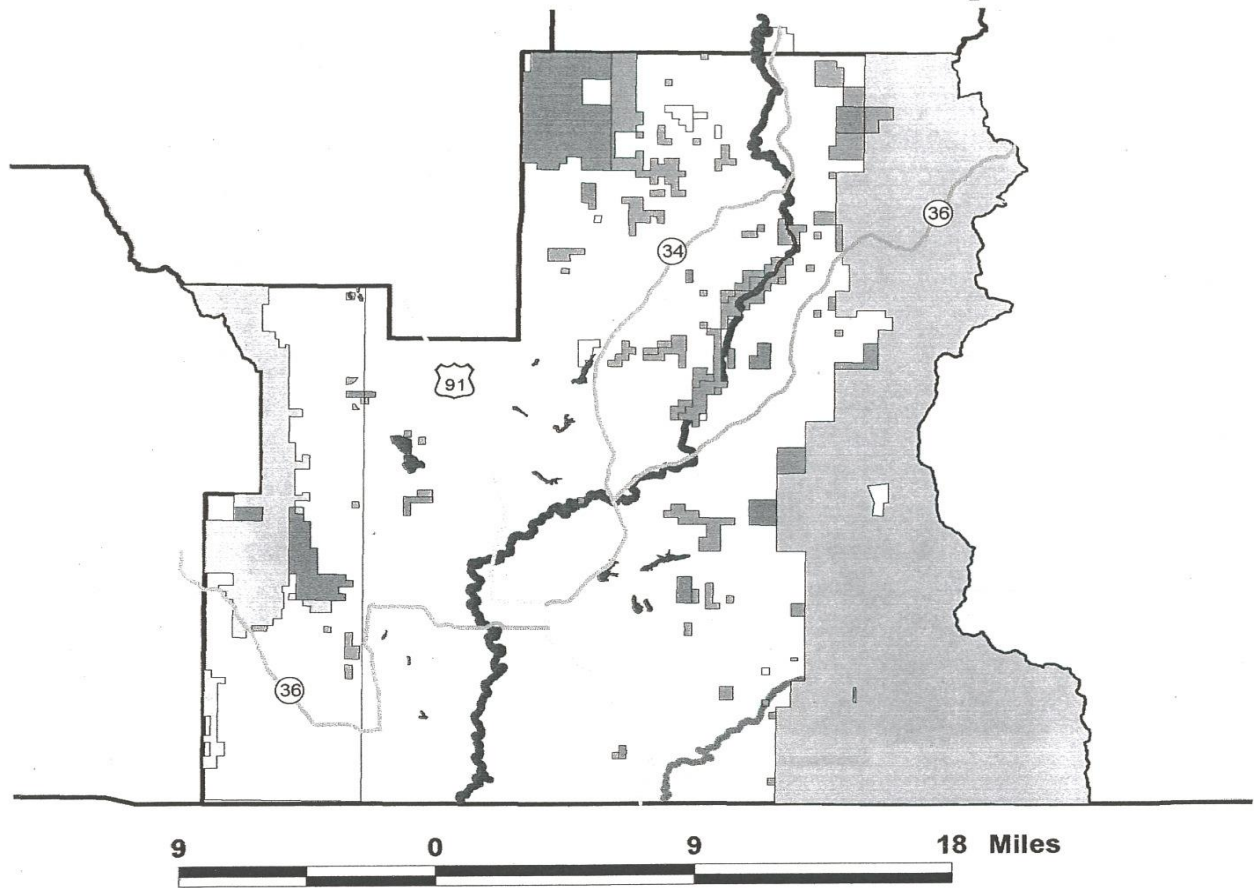
53,840	acres	Irrigated Cropland
83,599	acres	Dry Cropland
36,626	acres	Conserve Reserve Program (CRP)
19,703	acres	Pasture & Meadowland
65,047	acres	– Private Rangeland
6,591	acres	– Private Woodland
3,900	acres	Wetland
2,800	acres	Other Land includes barren land
1,300	acres	Urban Land
139,255	acres	Federal Land
13,259	acres	– State Land
3,200	acres	– Water
429,120	acres	– Total surface area

#### **Land Ownership**

(Attached Map 6-B)

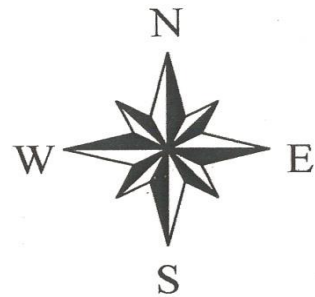
121,661	acres	Forest Service
15,493	acres	– Bureau of Land
2,101	acres	Management
13,259	acres	– Other Federal land
10	acres	– State of Idaho
30	acres	– County
273,366	acres	– Municipal
425,920	acres	– Privately Owned
		– Total Land Area

# Land Ownership



## Legend

-  State Hwy
-  US Hwy
-  B.L.M.
-  Forest Service
-  Open water
-  Private
-  State of Idaho
-  Cub River
-  Bear River
-  County



Map 6-B

### **GEOLOGY AND TOPOGRAPHY:**

Franklin County is located in the northern portion of the Cache Valley. The Cache Valley is a North-trending valley of about 660 square miles in Northeastern Utah and Southeastern Idaho. The Cache Valley drainage basin covers about 1,840 square miles and is a segment of the Bear River Basin. The Bear River basin is the only watershed in Idaho that drains to the Great Salt Lake instead of the Pacific Ocean.

Cache Valley is a complex graben composed of down thrown fault blocks covered by rocks of Cenozoic Age. Uplifted blocks surrounding the valley form the main mountain ranges. Maximum vertical displacement of the fault blocks probably exceeds 10,000 feet in parts of the valley. Interpretation of a gravity survey of Cache Valley indicates a maximum thickness of Cenozoic rocks of about 8,000 feet. Two oil and gas exploration tests show depths to pre-Cenozoic rocks of 4,875 and 5,203 feet.

Most wells tap Quaternary sand and gravel and a few wells tap sandstone conglomerate and fanglomerate of the Salt Lake Formation of Tertiary age. The principal springs issue from Paleozoic rocks (mostly limestone and dolomite) in the mountains and from Quaternary rocks in the valley.

The topography of Franklin County is made up of mountain ranges of the Bear River Range of the Wasatch Mountains on the east and the Wellsville and Malad Range on the west with elevations up to 10,000 feet at Oxford Peak. The valley floor ranges in elevation from approximately 4,400 to 5,400 feet and includes almost all of the cultivated land. The floor includes a low flat plain, gentle alluvial slopes, terraces, and deltas left by ancient Lake Bonneville. The terraces, fans, and deltas skirt the valley and, in places, extend several miles into the valley. They are most prominent at the mouths of the principal canyons. The surface soils vary from silty clay loams to sands-, loanas,, and loamy sands. The subsoils consist of an unusually deep mass of stratified clays, sands, and gravels. Natural drainage on most of the bench is good, with excessive concentrates of soluble salts found in the areas around Coulam, Franklin, and East Dayton.

### **CLIMATE:**

The climate of Franklin County corresponds in general with that of the semi-arid valleys of Southeastern Idaho and North Central Utah.

In winter, the average temperature is 23 degrees Fahrenheit and the average daily minimum temperature is 13 degrees. The lowest temperature on record, which occurred on December 23, 1990, is -31 degrees. In summer, the average temperature is 66 degrees Fahrenheit and the average daily maximum temperature is 83 degrees. The highest recorded temperature, which occurred on July 10, 1985, is 101 degrees. Only very rarely, however do temperatures exceed 98 degrees or fall below -10 degrees.

The total annual precipitation is about 16.03 inches, of this, 8.24 inches, or 51 percent, usually falls between April and September. In 2 years out of 10, the rainfall in April through September is less than 2.79 inches. The heaviest 1-day rainfall during the period of record from 1965 to 2003 was 2.2 inches on September 28, 1986. Thunderstorms occur on or about 24 days each year, and most occur in July. The average seasonal snowfall is about 35.1 inches. The

greatest snow depth at any one time during the period of record from 1965 to 2017 was 35 inches.

The growing season for most crops falls between April and September. The period between killing frosts averages 123 days in length. The average date of last killing frost in spring is May 24 and in fall is September 23.

The average relative humidity in mid-afternoon is about 44 percent, Humidity is higher at night and the average at dawn is 72 percent. The sun shines 79 percent of the time possible in summer and 44 percent in winter. The prevailing wind is from the southwest. Average wind speed is highest, 11.7 miles per hour, in April.

Climate	Franklin, ID	United States
<a href="#">Rainfall (in.)</a>	16.3	36.5
<a href="#">Snowfall (in.)</a>	45.1	25
<a href="#">Precipitation Days</a>	89	100
<a href="#">Sunny Days</a>	207	205
<a href="#">Avg. July High</a>	87	86.5
<a href="#">Avg. Jan. Low</a>	12	20.5
<a href="#">Comfort Index (higher=better)</a>	73	44
<a href="#">UV Index</a>	4.8	4.3
<a href="#">Elevation ft.</a>	4,862	1,060

## Section 2- Economic and Resource Conditions, Trends, Needs and Outlook for the District

### Economic

#### POPULATION AND EMPLOYMENT:

Attracting and retaining people to live, work, raise a family, and retire underlies the economic growth of any region. The total population of Franklin County in 2010, using data compiled by the United States Census Bureau numbered 12,786. Tracing population from 1969-2010 indicates that over the entire 41-year period, Franklin County's population rose from 7,397 in 1969 to 12,786 in 2010, for a net gain of 5,389. This growth trailed the statewide increase of 71.0 percent and outpaced the national increase of 33.0 percent.

Using data from the 2010 census the total population in Franklin County was 12,786. The rural and farm population numbered 8,155 or 69.7 percent of the total population in 2002. The urban population numbered 3,544 or 30.3 percent of total population. The majority of the urban population resides in Preston, which is the county seat. The city of Preston was established in 1866 and is the shopping center for the county, a radius of 12-15 miles. Other incorporated communities in Franklin County include Weston, Dayton, Clifton, Oxford, and Franklin.

Agriculture, and its related industry, is the major basic industry, with government, services, trade, and manufacturing providing the largest employment opportunities. Annual average total civilian employment in the county grew 28.4 percent from 1991 to 2001. This county has possibilities of development in areas of increased agricultural production and recreation. Preston City has developed an industrial park and the future looks promising for additional industrial presence. The trend and outlook for Franklin County includes continued emphasis on the rural lifestyle. Franklin County with its ample natural resources and prime living conditions, combine with an adjacent location to create a bedroom community for Logan Utah.

#### **AGRICULTURAL ECONOMY:**

The fanning and livestock industries in the district have flourished since the coming of the railroad. The first settlers quickly discovered the favorable combination of climate and fertile soil. Farming continues to be the biggest revenue producer in the county and the farmers depends on the FSWCD for advice and cooperation in improvement and development of a successful farming operation.

The approximate land area of Franklin County according to the 2012 Census of Agriculture was 664 square miles. The proportion of those acres that are in farm ground is fifty-three percent. According to the 2012 Census of Agriculture, Franklin County has 834 farms that operate on 262,609 acres. The average size of these farms are 315 acres and have combined farming and livestock operations. The acreage of non-irrigated and irrigated cropland, including pasture is nearly equal in the district. Over 70 percent of the farmers irrigate their cropland. The irrigated areas are primarily on the valley floors. Wheat, barley, and alfalfa, with some safflower are the dominant crops raised in the non-irrigated areas. Alfalfa, barley, and wheat are the major crops grown in the irrigated areas, with small acreage devoted to silage corn. There are also small areas of meadow hay southeast of Oxford, along the Oxford Slough, and along the Bear River Bottoms.

The total acreage in 1997 planted to wheat was 23,777 acres, which yielded 1,108,625 bushels (46 bushel per acre). Approximately 7,246 acres of this total was irrigated. The total acreage planted to barley was 16,627 acres of which 11,202 acres were irrigated. The 1997 crop yielded 1,211,900 bushels of barley (73 bushels per acre).

Dairy is the largest single source of income with 119 farms reporting dairy cattle as part of their enterprise. The dairy products sold generate \$28,806,000 for Franklin County. Beef cattle is another source of income, with the majority of the cattle being carried on rangeland during the summer months and fed on hay during the winter.

Agricultural production sustains a variety of marketing establishments such as the Franklin County Grain Growers, Inter-mountain Poultry Association, Cache Valley Dairy Association, and Franklin County Fur Breeders Association.

Because of the district's heavy dependence on agriculture to support itself, the economy is particularly vulnerable to shifts in the commodity markets. However, farming operations are fragile, as 50% of farm operators have a principal occupation other than fanning.

## **Section 3--Assessment**

### **URBANIZATION AND DEVELOPMENT:**

#### **Prime Farmland**

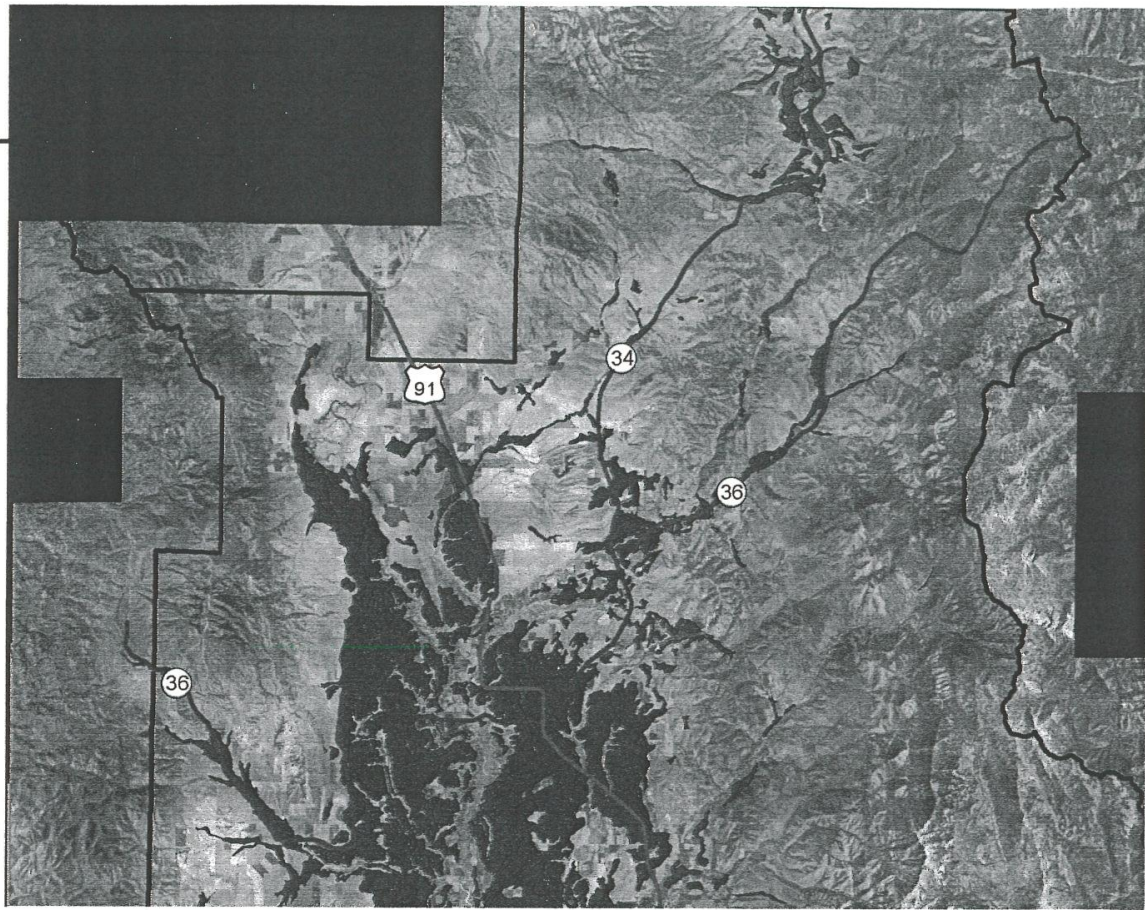
(Attached Map 7-A)

Prime farmland is rural land with the best combination of physical and chemical characteristics for producing food, feed, forage, and fiber and that is available for these uses. It has the combination of soil properties, growing season, and moisture supply needed to produce sustained high yields of crops in an economic manner if it is treated and managed according to acceptable farming methods. Franklin County has 52,000 acres or nearly 17 percent of the total land is prime farmland.

Urbanization and development leads to the fragmentation of agricultural land and the loss of prime farmland in growing areas. This places pressure on lands that are less productive.



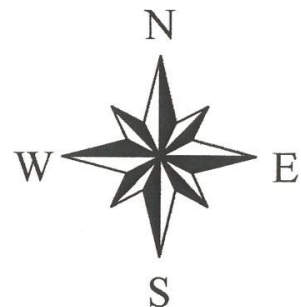
# Prime Farmland



9 0 9 18 Miles

## Legend

-  US Hwy
-  State Hwy
-  Prime farmland
-  Franklin County



Map 7-A

## **Natural Resources**

### **SOIL:**

As early as 1930, farmers took note of erosion and siltation along streams as land was converted from rangeland to cropland. They realized the need for soil and water conservation measures and practices to control the devastating effects of soil erosion and on December 17, 1947, established the Franklin Soil and Water Conservation District. Franklin County's critical erosion periods are during the spring runoff and during the summer months, when isolated thunderstorms occur. Critical erosion primarily occurs on the dry cropland areas with slopes greater than 8%. Major dry cropland in the District experiencing severe erosion problems includes the Treasureton, Banida, Oxford, Weston, Thatcher, and Mink Creek areas. It is estimated that Franklin County contains approximately 64,000 acres of highly erodible land (HEL) as defined by the Food Security Act of 1996. Approximately 36,626 acres of HEL has been adequately treated under the Conservation Reserve Program (CRP). Franklin County has enrolled the allowable 25% of eligible cropland into the CRP program and is unable at this time to enroll any additional acreage.

Of the 64,000 HEL acres, about 11,000 acres of irrigated land is considered HEL based on wind erosion criteria. These acres are located in the Linrose and Fairview areas. There is also an additional 5,000 acres of sprinkler-irrigated land with slopes above 8%, which experiences excessive irrigation-induced erosion. This land is scattered throughout the county with the majority of the acres located in the Thatcher, Oxford, and Mink Creek portions of the district.

Other existing erosion sources include the major slip areas along streams and river in the Riverdale, Mink Creek, Thatcher, and Treasureton areas. These slides are extremely active and several have given away completely in the past few years.

### **Soil Survey**

The Franklin Soil Survey was complete in 1995 and is available in our office, or you can access the information on the web at <http://websoilsurvey.nrcs.usda.gov>. The soil survey is used for both farming and urban land use planning. This survey includes general information, detailed soil map units and soil series in the area, and a description of how the soils formed. The use and management of the soils and the major soil properties is also described. The completed survey includes orthophoto quadrangle maps of the entire district. Information from the soil survey can be obtained at the Franklin Soil & Water Conservation District office. Information will also be provided by mail or fax upon request.

### **WATER RESOURCES:**

#### **Surface Supply and Demand**

Soil and water are the most important natural resources in the district. The Bear River, which runs northeast to south through the county, is the largest drainage on the North American continent that does not reach an ocean. Annually, 500,000 acre-feet of water enter Franklin County as surface water from drainage basins of the Bear River. Major sources of surface water originating within the district include the Cub River and the Mink Creek watersheds. Water in the district is used primarily for domestic purposes, livestock, and irrigation. Springs and deep wells supply most of the water used for domestic purposes throughout the county. Perennial streams, spring developments, and wells provide supplies of water for livestock and wildlife in



most parts of the county. Irrigation water in the valley is supplied from over a dozen reservoirs developed for irrigation water storage. Water is also diverted from major streams to irrigate small acreages in and along the adjacent bottomlands.

All streams within the district are tributaries of the Bear River and are diverted for irrigation during the growing season. Water rights for these streams are held by various irrigation companies and individuals. The flow of these streams is dependent upon the winter snowpack in the mountain watersheds and seasonal temperatures. Consequently, the average flows are high in the spring and early summer, but are low during the last half of the growing season. This creates a situation in which the supply of water does not coincide with the total irrigation season of use. This pattern creates problems associated with irrigated agriculture. Problems include over-irrigation and inefficient delivery. The lack of irrigation water management results in an increased water table, increased salinity, and excessive nutrient leaching. The high water table on irrigated cropland is prevalent below the Cub River canal and adjacent to the Oxford slough, as well as many smaller areas of the district. Limited production and planting and harvest delays are all problems associated with the high water table.

#### Groundwater Supply and Demand

Ground water is discharged mainly from springs, seeps, and wells. Underflow across the Utah /Idaho line is estimated to be approximately 4,000 acre-feet annually. The most productive aquifer system in the Idaho portion of the Cache Valley is located in the Weston Creek area. Well yields of 2,500 gallons per minute have been reported. Ground water recharge is mainly by precipitation, stream and irrigation systems seepage, and subsurface inflow.

In Idaho, the Bear River is a gaining river. The river gains water from tributaries and ground water recharge as it flow toward Utah. Ground water and surface water is hydraulically connected. Because of this pumping ground water depletes surface water.

The Director of Idaho Department of Water Resources established the Bear River Ground Water Management Area in August 2001. Based on the recommendations of an advisory committee the Director adopted a management plan in February 2003. The Idaho legislature through House Concurrent Resolution No, 56 directed the Natural Resources Interim Committee to "conduct a study regarding water supply and management issues in ... the Bear River Drainage". This will "develop a framework for management of the Bear River aquifer to ensure the long-term sustainability of the ground water supply for all beneficial users in accordance with the prior appropriation doctrine as established by Idaho Law."

#### Flooding

The abundance of water resources causes flooding and associated sedimentation problems along the streams and rivers in the District following an abnormally high winter snow accumulation in high mountain areas or a rapid thaw due to excessively high temperatures in the spring. The flooding results are generally mild as most of the affected land is pasture or hay. The only exception to this rule is in the low-lying areas of the Cub River. Due to stream bank erosion and alteration, the spring runoff saturates the soil in such a way as to reduce or remove the productivity of adjacent lands.

Nitrate Priority Areas. The nitrate areas of concern are prioritized on the following: 1) population within areas of concern, 2) current nitrate levels in groundwater, 3) nitrate trends in groundwater (increasing, decreasing, no trends, and 4) other beneficial uses of the groundwater. The Preston/Cache Valley area is located in the Franklin Soil & Water Conservation District and has been ranked twenty-two. Irrigated agriculture is the primary land use. Approximately 600 people live in this identified area consisting of 129,000 acres. Well monitoring data showed that 23.0 percent of wells had greater than 5.0 ppm and 54.1 percent of wells had greater than 2.0 ppm.

#### Energy generation

Water is also used to generate electricity in the District on the Mink Creek, the Glendale Reservoir, and the Oneida Narrows Reservoir. The city of Preston generates water via a hydro plant located in conjunction with the main delivery pipe of their city water system. A large reservoir, Oneida Narrows, exists on the Bear River in the North Central portion of the county. This reservoir is for power generation owned by PacifiCorp, and stream flows downstream vary daily.

Geothermal springs located along the Bear River have given rise to recreational development and the potential for aquaculture and greenhouse specialty crops.

#### **FISH & WILDLIFE:**

All species of wildlife have some importance, either to the individual recreationist or to the local ecosystem in general. It is important to maintain a wide variety of habitats to sustain a wide variety of wildlife species. The species of greatest importance in this area are generally those classified as game species and furbearers, but this area also supports several species of wildlife classified as rare and endangered, threatened, or sensitive.

Franklin County offers a wide variety of game fish species in both reservoirs and streams. The two major free flowing streams are Bear River and Cub River. Bear River offers a trout fishery and some limited warm-water species. Cub River and other smaller streams are considered trout fisheries only.

Conservation planning for wildlife on land that is shared with domestic animals include the following assumptions: 1) All land and waters provide habitat for wildlife, 2) The quality of habitat is variable depending on the quality, quantity, and interspersed of food, cover, water, or room for living, 3) Wildlife populations are proportional to the quality and quantity of habitat available. Wildlife use of an area is dependent on the variety of habitats it supports and its size.

#### Endangered Species and Species of Concern

Rare and endangered species found in this area are generally closely associated with waterways and wetlands. These areas are essential for these species existence. According to the federal government, four species listed threatened or endangered are present in the Franklin Soil & water Conservation District. These species and their special status include Bald Eagle (Threatened), Whooping Crane (Endangered), Canada Lynx (Threatened), and Ute Ladies Tresses (Threatened). In addition, the U.S. fish & Wildlife Service has concerns about the population status and threats to their long-term viability. These species include the following: Wolverine, Pygmy Rabbit, Trumpeter Swan, Northern Goshawk, White-faced Ibis, Columbian Sharp-tailed Grouse, Black Tern, Bonneville Cutthroat Trout, and Cache Penstemon.

Various species are of special concern because they have the same status in Utah. This list includes the Rock Squirrel, Brewer's Sparrow, Swainson Hawk, Short-eared Owl, and Western Toad.

#### Waterfowl Production Areas

Oxford Slough Waterfowl Production is a wildlife refuge located near the Franklin Bannock county line that includes 1890 acres of wetlands, meadows, and uplands. Oxford Slough is administered by the U.S. Department of Interior, Fish & Wildlife Service. Primarily developed for protection of redhead duck nesting habitat, it attracts large number of duck and wading birds such as Redheads, Franklin's Gulls, Forster's and Black Terns, White-faced Ibis, Snowy and Cattle Egrets, Black-crowned Night Heron and Great Blue Heron. Trumpeter Swans and Whooping Cranes have also been observed. Several of these species are listed or are other special status species.

In addition to the Oxford Slough large areas of the district produce adequate habitat for waterfowl. These include the Bear River bottoms and wet meadows, slow moving tributaries, and irrigation reservoirs and ponds.

#### Sagebrush & Grassland Habitat

Although the sagebrush country of Southeastern Idaho may seem less scenic than mountains, forests and rivers, it is of equal importance for fish, wildlife, and humanity. Where functional, sagebrush ecosystems protect water quality, prevent soil erosion, and provide habitat for hundreds of sensitive plants and animals. Restoration of streambank, riparian area, and associated uplands provide the basics of food, water, shelter, and nesting materials for animals both wild and domestic.

Healthy grasslands that provide habitat for a variety of wildlife include a high diversity of native plant communities of different ages. Many sagebrush birds such as the Columbian Sharp-tailed Grouse are associated with sagebrush grasslands. In Franklin County these areas consist of perennial bunch grass and where the shrub layer is dominated by sagebrush or antelope bitterbrush. They need habitat with moderate vegetative cover, high plant diversity, and high structural diversity.

The minimum or optimum sizes of habitat patches required to sustain populations of sagebrush birds such as Columbian Sharp-tailed Grouse and other wildlife are still largely unknown. A large expanse of sagebrush habitat is a target of a self-sustaining population. Large sections of this district are currently enrolled in the Conservation Reserve Program (CRP). Although planned as temporary reserve lands, CRP plantings could provide important habitat to sagebrush birds, especially in areas suffering large losses of sagebrush shrublands.

#### Big Game Range

Elk, Deer, and Moose are present in the district. Elk summer in the higher mountain ranges and winter throughout the lower valleys. There is a resident moose population in the same areas, utilize the riparian areas for habitat.

#### Outdoor Recreation:

Franklin County offers a rural environment that supports a wide variety of year-round recreational opportunities. Outdoor recreation within the district includes big game hunting, upland game bird hunting, waterfowl hunting, fishing (stream & reservoir), trapping, camping, hiking, photography, water skiing, cross-country skiing, & snowmobiling. Thirteen irrigation reservoirs within the county offer both warm water and trout fishing. In addition, these

reservoirs provide thousands of hours of camping, fishing, and water sport recreation, and are considered a major attraction to this area.

Opening day (weekend) of hunting and fishing season is usually characterized by a large influx of people from Utah and Pocatello. This causes negative feelings among some local residents, but the large number of people usually drops off dramatically as the season progresses, and has little lasting impact on the resource. The recreational use of this area provides a very positive impact to the local economy. Several local businesses are supported to a large degree by monies generated from recreational activities. The recreational opportunities provided in this area truly enhance the quality of life and is a significant reason for people to live in Franklin County. Localized demands on small areas may however create “congestion” problems and decrease the quality of the outdoor experience. The following are problems associated with recreational activities in the district:

1. Draw-down of reservoirs for irrigation demands.
2. Erosion along reservoir banks.
3. Possible transfer of invasive species.
4. Trespassing with or without motor vehicles (causing soil erosion, crop damage, and spread of noxious weeds).
5. Poorly defined borders between public and private lands.
6. Litter.
7. Congestion at camping facilities.

#### **Wetlands:**

There are approximately 8,000 acres of wetlands in Franklin County occurring along the riparian areas of the Bear River and the tributaries. They are also found in conjunction with the reservoirs, Irrigation systems, and numerous perched water table seeps. Recognition of the value of wetlands in the landscape has resulted in regulation, incentive programs, research, and protections of wetland habitat. The Conservation Strategy for Southeastern Idaho Wetlands identified and classified 2 wetland sites. These sites are relatively intact systems, where actions such as livestock management, buffer creation, and public education will maintain and potentially improve the wetland functions. Gains in wetland function can also be achieved by restoring the hydrology at or adjacent to the sites. Oxford Slough is the first site and is managed by the U.S. Fish & Wildlife Service. The second site, which is influenced by road impacts and alteration of upstream flows, is the Oneida Narrows. Idaho’s last known remaining stand of the Boxelder (*Acer negundo*/*Cornus stolonifera*) occurs along the Bear River. This site provides habitat for rack squirrel and for wintering Bald Eagles.

#### **Riparian:**

Healthy riparian vegetation is one of the most important elements for a healthy stream ecosystem. This element is the width of the natural vegetation zone from the edge of the active channel out onto the flood plain. The vegetation must be natural and consist of all the structural components (aquatic plants, sedges or rushes, grasses, forbs, shrubs, understory trees, and overstory trees) appropriate for the area. Natural vegetation should extend at least two active channel widths on each side.

Healthy riparian areas exist in the upper mountain areas. As you move down slope into the rangelands, the healthy riparian area begins to give way to a less than optimum condition on the majority of the streams. Typically, the valley bottom is the location of the agricultural land. Past agricultural practices have removed most of the riparian area and the majority of streams have natural vegetation consisting of less than a third of the active channel width on each side.

Franklin County has two major waterways, the Bear River and the Cub River. Numerous creeks are tributaries to the above rivers. The primary water source is snowmelt. Spring runoff can produce heavy flows, depending on snow pack. Some banks are eroded. In most instances, livestock use the waterways to water. This causes badly eroded stream banks and poor riparian conditions.

## **Section 4—Water Quality Component**

### **WATER QUALITY STATEMENT**

The Franklin Soil and Water Conservation District willingly accepts the responsibility inherent to Districts to address agricultural non-point source pollution as set forth in the 1987 Water Quality Act - Section 319; the Safe Drinking Water Act of 1986; and the Clean Water Act of 1972 Anti-degradation Program. The Franklin Soil and Water Conservation District accepts this responsibility in order to preserve a locally administered voluntary approach for control and abatement of agricultural non-point source pollution, to protect and enhance the quality and value of water resources of the State of Idaho.

The designated beneficial uses that are not being supported for the listed streams in within Franklin SWCD are Cold Water Aquatic Life, Salmonid Spawning, Primary Contact Recreation, and Secondary Contact Recreation. These uses are not supported because of sediment and phosphorus levels in the surface waters. IDEQ has been monitoring the main stem Bear River the last 5 years and the data is showing a reduction in these levels due to the BMPs that have been installed in the past few years. The agriculture implementation plans have been written for the streams which have TMDLs written allowing the Franklin SWCD to move ahead with implementation in these watersheds.

**Listed and impaired §303(d) and Category 4A lakes and streams**

<b>Stream/Lake Name</b>	<b>Type</b>	<b>Basin</b>	<b>HUCNAME</b>
Bear River	Perennial Stream	Bear River	Middle Bear
Beaver Creek	Perennial Stream	Bear River	Little Bear-Logan
Clifton Creek	Perennial Stream	Bear River	Middle Bear
Cub River	Perennial Stream	Bear River	Middle Bear
Deep Creek	Perennial Stream	Bear River	Middle Bear
Five Mile Creek	Perennial Stream	Bear River	Middle Bear
Foster Reservoir	Artificial Path	Bear River	Middle Bear
Glendale Reservoir	Artificial Path	Bear River	Middle Bear
Hodge Nibley Creek	Intermittent Stream	Bear River	Little Bear-Logan
Logan Creek	Perennial Stream	Bear River	Little Bear-Logan
Newton Creek	Perennial Stream	Bear River	Middle Bear
Battle Creek	Artificial Path	Bear River	Middle Bear
Bear Creek	Intermittent Stream	Bear River	Middle Bear
Birch Creek	Perennial Stream	Bear River	Middle Bear
Cottonwood Creek	Perennial Stream	Bear River	Middle Bear
Crooked Creek	Intermittent Stream	Bear River	Middle Bear
Dry Creek	Intermittent Stream	Bear River	Middle Bear
King Creek	Perennial Stream	Bear River	Middle Bear
Kuntz Creek	Intermittent Stream	Bear River	Middle Bear
Left Fork Maple Creek	Intermittent Stream	Bear River	Middle Bear
Maple Creek	Intermittent Stream	Bear River	Middle Bear
Middle Fork Cherry Creek	Perennial Stream	Upper Snake	Portneuf
Mink Creek	Perennial Stream	Bear River	Middle Bear
Oneida Narrows Reservoir	Artificial Path	Bear River	Middle Bear
Right Fork Williams Creek	Intermittent Stream	Bear River	Middle Bear
Sant Creek	Intermittent Stream	Bear River	Middle Bear
South Fork Dry Creek	Perennial Stream	Bear River	Middle Bear
Spring Creek	Intermittent Stream	Bear River	Middle Bear
Station Creek	Intermittent Stream	Bear River	Middle Bear
Strawberry Creek	Perennial Stream	Bear River	Middle Bear
Trout Creek	Perennial Stream	Bear River	Middle Bear
Weston Creek	Intermittent Stream	Bear River	Middle Bear
Williams Creek	Perennial Stream	Bear River	Middle Bear
Worm Creek	Intermittent Stream	Bear River	Middle Bear

## **Section 5—Identify and Prioritization of Objectives**

The Franklin SWCD has considered many resource problems in developing this Resource Conservation Plan. Supervisors of the Franklin SWCD believe each problem is important and merits attention.

However, due to limited financial and human resources available to the SWCD, we have prioritized our objectives to indicate which areas will receive the greatest emphasis in our annual activities. This priority list also indicates what areas in which the SWCD will request assisting technical staff to concentrate their efforts.

Please see the following summary of the attached annual work plan:

### **Water Quality**

Priority: 1 Goal: To help and maintain the chemical, physical, and biological integrity of Franklin County water to meet the Clean Water Act.

### **Cropland (Irrigated and Dry)**

Priority: 2 Goal: Reduce soil erosion, noxious weeds, and increase crop quality and quantity by promoting improved soil structure, better water management, and improved crops.

### **Information and Education**

Priority: 3 Goal: Encourage public education of understanding the importance of maintaining and improving natural resources and all conservation concerns.

### **District Operations**

Priority: 4 Goal: Encourage and develop well balanced positive district leadership.

### **Land Resource**

Priority: 5 Goal: Develop, restore, and maintain existing natural resources and improve forage and water use on public and private lands.

### **Urban**

Priority: 6 Goal: Provide leadership in public programs and encourage and provide resource information to urban entities.



**Water Sheds**  
(Attached Map 6-C)

Upper Bear River-District boundary to Oneida Dam  
Lower Bear River-Oneida Dam downstream to Idaho-Utah border.  
Cub River--Source to Idaho-Utah border

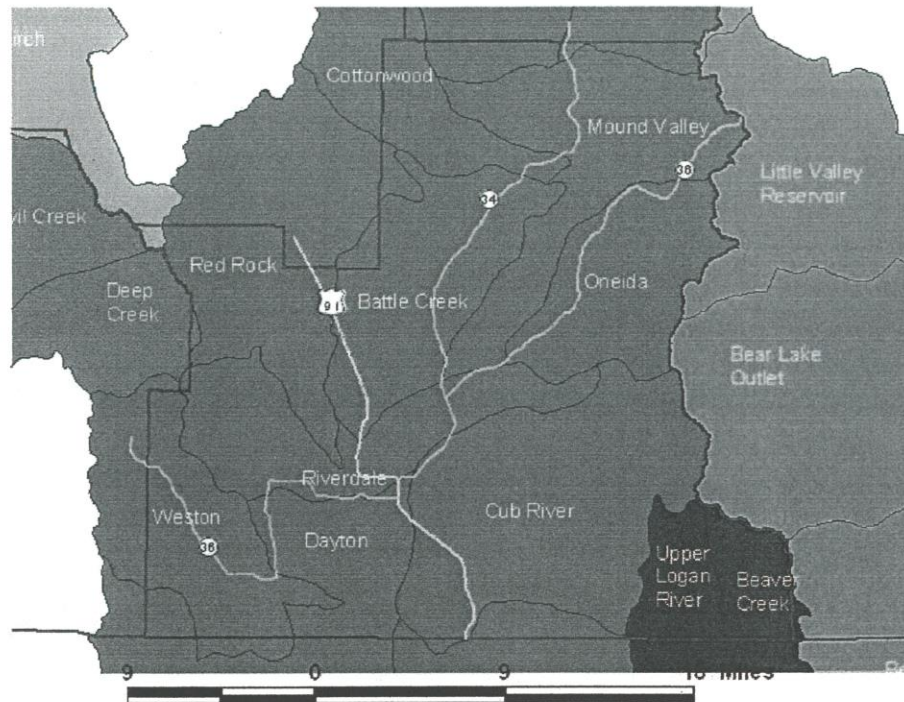
**Surface Water Quality**  
(Attached Map 8-A)

Water bodies on the §303(d) list associated with the Clean Water Act of 1972 have been determined to be water quality limited, that is, they do not support their beneficial uses or exceed water quality standards. This list is organized by hydrologic unit code (HUC). This is a unique number describing a series of nested watersheds. All the watersheds in Franklin County are described in HUC# 16010202.

**Ground Water Quality**  
(Attached Map 8-s)

Idaho's major agencies that deal with water, the Idaho Department of Environmental Quality (IDEQ), the Idaho Department of Water Resources (IDWR), and the Idaho State Department of Agricultural (ISDA)---have identified 25 geographic areas within the state that have elevated concentrations of nitrates in aquifer (groundwater) and has designated these areas as Group One

# Watersheds



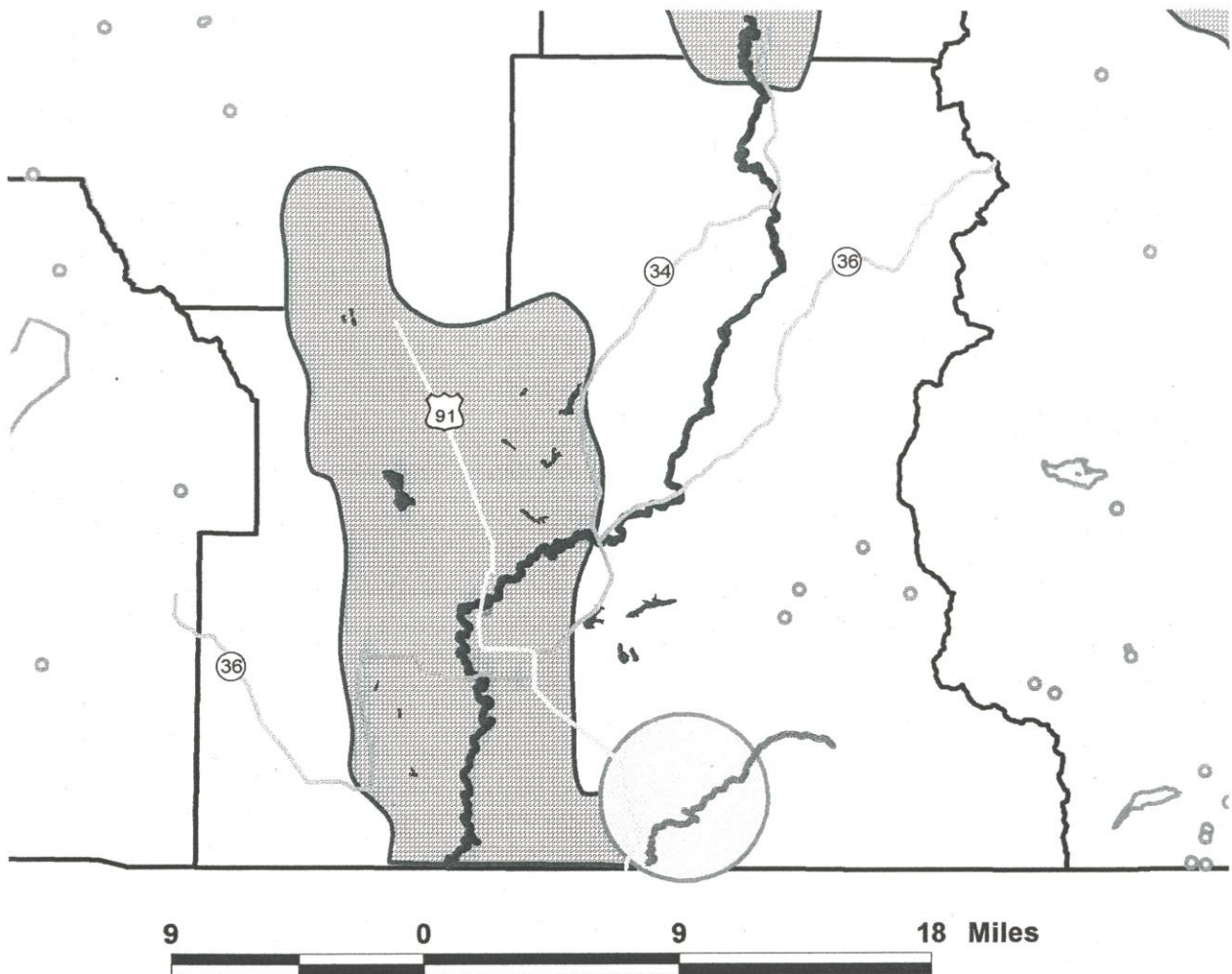
## Legend

- State Hwy
- US Hwy
- County
- Hydrologic Unit Code**
  - BEAR LAKE
  - LITTLE BEAR-LOGAN
  - LOWER BEAR-MALAD
  - MIDDLE BEAR
  - PORTNEUF



Map 6-C

# Ground Water Quality



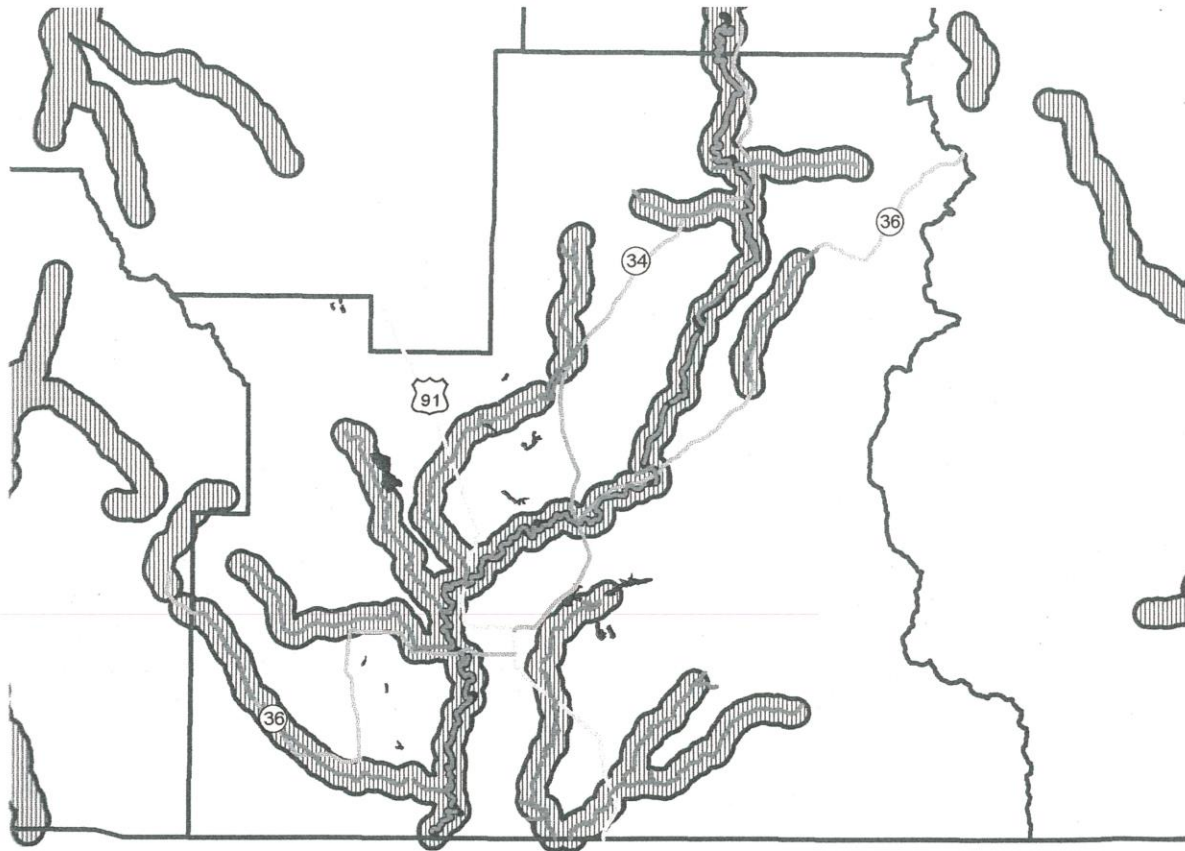
## Legend

- Cub River
- US Hwy
- State Hwy
- Major Lake and Reservoirs
- Bear River
- Critical Drinking Protection Area
- Groundwater Nitrate Priority Area
- County



Map 8-B

# Surface Water Quality



9 0 9 18 Miles

## Legend

303 -d listed streams  
with buffers



Map 8-A

## Section 6—Identify and Prioritize Projects

The Franklin SWCD has a long tradition of providing ways to improve agricultural production and devising more environmentally sound farming techniques. FSWCD subscribes to and believes that many conservation practices can be effective in improving water quality. These elements include development of upland forage and water sources, improved irrigation and drainage management systems, establishment of wildlife habitat, protection and restoration of streambanks and riparian areas, and improved manure management practices.

The process of restoring the Bear River watershed will require cooperation and volunteerism from many sources. Consequently stream restoration efforts will be varied. It is critical that a qualified entity that fully understands the planning process and can effectively work with various disciplines leads the effort. In addition it is extremely important to have technical assistance that is properly trained in engineering and geomorphology as well as basic conservation to develop designs for successful implementation. Based on these guidelines, the Franklin SWCD will provide oversight and coordination for the various stream restoration activities in the watershed to encourage continuity from one area of treatment to the next and to assist with suggestions for funding and streamlined permitting.

The Franklin SWCD action plan associated with the Middle Bear River Watershed: Mound Valley exemplifies Locally Led Conservation. It is based on the principle that community stakeholders are best suited to deal with natural resource problems. We have blended the USDA Local Working Group (LWG) into our prioritization of natural resource concerns. This group consists of a diverse assortment of community stakeholders that are best suited to identify and resolve local natural resource problems. During 2009, this group identified the resource concerns for Franklin County. They prioritized these concerns into the top 5 based on the probability of landowner acceptance without regard to program specifics. These 5 concerns are: 1) Noxious Weeds, Pests, and Insects, 2) Streambank Erosion, 3) Quantity of Irrigation Water, 4) Domestic animals – inadequate water, 5) Animal waste in soil and nutrients in surface water. They evaluated the USDA programs and authorized the Franklin SWCD to locate additional funding targeted to addressing the bio-nutrient runoff and sedimentation from Animal Feeding Operations. This project will use a watershed basis to address each of these concerns.

Because the scale of land management varies widely it is important to address nonpoint source pollution by contributors. Building of the foundation of the TMDL, the Idaho Agricultural Pollution Abatement Plan (Ag Plan) is an action plan that describes the nonpoint source agricultural sector pollution as it relates to water quality. The goal of full support of the identified beneficial uses will be achieved through an implementation strategy. This strategy is known as the Northern middle Bear River Total maximum Daily Load Implementation Plan for Agriculture. The objectives and tasks recommended in this strategy will reduce the amount of sediment and nutrients in the Bear River from agricultural sources.

## **District Operation Evaluation**

We are committed to executing an outcome-based evaluation system that clearly defines the goal, encourages the use of appropriate analysis, takes into consideration cost-benefit, and increases the efficient use of management resources. This system involves planning, implementation, and education activities.

Resource Management System planning involves more than considering individual resources. It focuses on the natural systems and ecological processes that sustain the resources. During our planning process, we strive to balance natural resources issues with economic and social needs through the development of applicable conservation management system plans.

Conservation management systems plan implementation includes best management practices implemented according to the standards and specifications developed by the USDA: Natural Resources Conservation Service (NRCS) as designated by the agricultural pollution abatement plan. These standards are a set of statements that defines the practice; identifies the purposes and applicability; list special planning and designing considerations and the operation and maintenance requirements. During implementation, site visits are done to ensure the construction is completed to the specified standards and specifications.

FSWCD is engaged in an on-going effort to provide conservation information and education programs and experiences to youth and adults. Information and education has three goals: increase the awareness of the FSWCD district's role, increase Best Management Practices (BMPs) implementation by private landowners, and involve the public in natural resource issues.

The summation of this evaluation system is the annual Franklin Soil & Water Conservation District Annual Report that is distributed under separate cover to the people we serve to show the use of public funds, to gather continued support, and to build enthusiasm for conservation issues.

Direct grant funding is grants that directly came to the FSWCD and were dispersed to the cooperators. Indirect grant funding and Loan funding are grants and loans that the FSWCD assisted with and were instrumental in bringing to the landusers of Franklin County.

## Section 7—Calendar of Events

### FRANKLIN SOIL & WATER CONSERVATION DISTRICT UPCOMING EVENTS AND MEETINGS

#### January 2021

- 1 New Years Day – Federal Holiday
- \* FSWCD Board Meeting – 7:00 pm
- \* Martin Luther King Day – Federal Holiday
- \* Legislative Displays in Boise
- \* Legislative Appreciation Social
- \* NACD National Meeting

#### February 2021

- \* FSWCD Board Meeting – 7:00 pm
- \* Presidents Day – Federal Holiday

#### March 2021

- \* FSWCD Board Meeting – 7:00 pm
- \* Division V Spring Meeting
- \* 5<sup>th</sup> grade education presentation / poster contest

#### April 2021

- \* FSWCD Board Meeting – 7:00 pm

#### May 2021

- \* Ecology Course – Alternative High School
- \* FSWCD Board Meeting – 7:00 pm
- \* Memorial Day – Federal Holiday

#### June 2021

- \* FSWCD Board Meeting – 7:00 pm
- \* Fiscal Year ends

#### July 2021

- \* FSWCD Board Meeting – 7:00 pm
- 4 Independence Day – Federal Holiday
- \* NACD Summer Meeting

#### August 2021

- \* FSWCD Board Meeting – 7:00 pm
- \* Franklin County Fair Display

September 2021

- \* FSWCD Board Meeting / Fall Tour
- \* Labor Day – Federal Holiday
- \* NACD Pacific/Southwest Regional Meeting

October 2021

- \* FSWCD Board Meeting – 7:00 pm
- \* Division V Fall Meeting

November 2021

- \* FSWCD Board Meeting – 7:00 pm
- \* Veterans Day – Federal Holiday
- \* Annual IASCD Conference
- \* Thanksgiving – Federal Holiday

December 2021

- \* FSWCD Board Meeting – 5:30 pm
- 25 Christmas Day – Federal Holiday



## Section 8-- Implementation

Implementation of the five year plan will be accomplished by annual work plans prepared by the Franklin SWCD. The annual plan will address those items and projects that the District plans to accomplish upon consideration of the available technical and financial assistance and public support for the proposed projects.

The following is a list of some key planning terms that the Franklin SWCD utilizes in their implementation of their Annual plan of work.

- Goal:** Resource goals will be developed to provide more detailed focus with regard to the conservation issues to be addressed by the Franklin SWCD. Goals are generally broad statements highlighting a preferred direction for the Franklin SWCD in an effort to satisfy our mission.
- Objective:** Objectives are defined as general approaches designed to fulfill individual goals. Objectives may be measurable in broad terms.
- Strategy:** Strategies are more specific methods designed to fulfill the identified objectives.
- Task:** These are individual roles, or activities, that will be considered by the Franklin SWCD within the next year in order to fully implement the identified strategies. Individual tasks will have varying degrees of Franklin SWCD involvement. The following list of “actions: summarizes a decreasing level of Franklin SWCD commitment. Each task will be associated with a single action identifying the maximum degree of commitment the Franklin SWCD may be willing to make within the next five years, if adequate technical and financial resources become available to commit to individual tasks. The Franklin SWCD will commit lesser degrees of action if resources are limited.

For example, in the Resource Conservation Plan, the Franklin SWCD may identify its preferred role over the next five-year period as: “*Participate* in IDEQ’s development of the Bear River Watershed Plan”. However, due to limited funding and/or staffing resources available within Franklin SWCD’s FY budget, the Board of the Franklin SWCD, through its FY Annual Plan, may opt to simply identify their role as: “*Review* IDEQ’s Bear River Watershed Plan”.

The Franklin SWCD addresses a wide variety of issues from governance to on-the-ground implementation.

The following list of task “actions” summarizes a decreasing level of Franklin SWCD involvement or commitment:

- Coordinate:** Coordination implies an active leadership role for the design, development and implementation of a given task.
- Participate:** Participation implies that another entity or individual assumes the lead coordination role and the Franklin SWCD serves in an active advisory or supporting role.
- Facilitate:** Facilitation assumes a temporary leadership role with primary roles eventually assumed by other parties. The facilitation role of the Franklin SWCD is to link interested individuals with existing agencies and community resources.
- Review:** Reviews include the identification and summation of resource conservation concerns within Franklin County and an outline of the Franklin SWCD’s potential future role.
- Monitor:** Monitoring implies a passive role that simply keeps the Franklin SWCD alert to resource conservation issues that may affect Franklin County.
- Inform:** Inform refers to the dissemination of readily available resource conservation information.
- Sponsor:** Sponsorship implies financial contributions in the form of membership dues or project/event donations.
- Endorse:** Endorsement implies explicit support for individual conservation strategies developed by other agencies and organizations. The Franklin SWCD does not have an active role within the proposed strategy.

## FY2021 (7/1/2021 – 6/30/2022) Annual Plan of Work

### Franklin Soil & Water Conservation District

---

#### Priority Area Number 1: Information and Education

**Goal(s): Encourage and provide public education emphasizing the importance of maintaining and improving natural resources and all conservation concerns.**

<b>Strategies/Tasks for FY2021</b>	<b>Target Dates</b>	<b>Person(s) Responsible</b>
Develop an adult education day based on current issues	Nov-Jan	Supervisors/Staff
Provide financial support of county tours by other environmental partners - subject to funds available	Upon Request	
Participate with IASCD in a Legislative Social and Display Day	Jan	Supervisors, Staff
Create and present a 3-day county fair booth focusing on environmental concerns	August	Staff
Participate in an After School Program with the Preston Jr. High School	Sept - Jan	Chris Hatch
Prepare and present to any school, scout troop or church group information concerning water quality and environmental concerns.	Upon request	
In conjunction with the NACD stewardship theme provide a presentation and sponsor a 5 <sup>th</sup> grade poster contest for all 5 <sup>th</sup> grade students	March	Chris Hatch, Staff
Complete a student-monitoring program on sites with the assistance of FCHS students.	April	Chris Hatch, George Hitz
Coordinate, with the assistance of various organizations and entities, a 12-day Ecology course for 12-24 students from the Franklin County High School (FCHS)	April/May	Chris Hatch
Participate in IASCD Division V / State Poster contest.	Oct	Chris Hatch
Maintain and update a Franklin County Reservoir Alliance Facebook page as needed		Staff
Apply to Foundations for assistance with grants for youth and adult education		Staff
Maintain and use a District Facebook page to provide information to the public	Monthly	Staff

## FY2021 (7/1/2021 – 6/30/2022) Annual Plan of Work

### Franklin Soil & Water Conservation District

#### **Priority Area Number 2: Urban**

**Goal(s): Provide leadership in public in Natural Resource programs. Encourage a complete ecosystem approach by providing natural resource information to urban land use managers and entities.**

<b>Strategies/Tasks for FY2021</b>	<b>Target Dates</b>	<b>Person(s) Responsible</b>
Stay in touch with the natural resource issues of Franklin, Preston & Weston cities		
Make soil survey data available to the public.		
Participate in the Tri-state Bear River Water Task Force.	Bi-monthly	DEQ
Receive a report from county commissioners at each regular board meeting	Monthly	Robert Swainston, County Comm.
Participate with IDEQ and UDEQ on an unattainment airshed State Implementation Plan		Staff
Provide recommendation to the county commissioners on natural resource issues		Robert Swainston, County Comm.
Provide information on native trees and grasses that provide environmental benefits to the public. Coordinate sales with Bear Lake SWCD and Central Bingham SWCD	Spring	Chris Hatch
Provide recommendations to the Franklin County Planning & Zoning concerning natural resource issues in association with county comprehensive plan.	As requested	Supervisors
Assist Planning & Zoning/building inspector	As requested	Supervisors
Develop conservation plans for county entities	As requested	
Offer assistance on natural resources to irrigation companies, municipalities, and county entities	Upon request	Supervisor
Review all Stormwater Pollution Prevention Plans and report to the County P&Z	In conjunction with P&Z	Supervisors
Offer assistance regarding EPA requirements of Preston City waste- water treatment facility; specific to DEQ state revolving funds.		Staff
Assist Franklin County with obtaining soil samples and provide recommendation on soil mechanic for subdivisions requests.		Supervisors
Coordinate joint activities with Preston FFA		Staff
Present a proposal to Consolidated to run the Glendale Invasive species verification station		Staff

## FY2021 (7/1/2021 – 6/30/2022) Annual Plan of Work

### Franklin Soil & Water Conservation District

#### **Priority Area Number 3: Land Resources**

**Goal(s): Develop, restore, and maintain existing natural resources and improve forage and water use on public and private lands. Reduce soil erosion, noxious weeds, and increase crop quality and quantity by promoting improved soil structure, better water management, and improved crops**

<b>Strategies/Tasks for FY2021</b>	<b>Target Dates</b>	<b>Person(s) Responsible</b>
Encourage winter range improvements for big game and upland birds in CRP plans.		Pheasants Forever
Encourage BMP's on wetland, riparian, rangeland, and pasture.		Staff and partners
Support and encourage spring developments for livestock and wildlife.		
Investigate opportunities for "Partners for Wildlife" and "Habitat Improvement Projects".		Matt Bringhurst, USFWS
Keep cooperators abreast of new developments in beef feedlot regulations.		DEQ
Work with P&Z on preserving open space on clustered subdivision.		Supervisors
Partner with Pacificorp – ECC on Conservation Easements		Supervisors
Investigate potential funding sources for Conservation Easements.		Staff / Supervisors
Identify and promote new crops to restore and improve agriculture financial viability.		Bracken Henderson
Evaluate the adaptability and effectiveness of new crops and methods.		Bracken Henderson
Present new technology to improve water quantity and efficiencies on cropland.	Summer	
Invite IF&G Farm Bill Coordinator to regular board meetings.	Monthly	Pheasants Forever, Staff
Improve / maintain habitat for Sharptail Grouse and other upland birds		Pheasants Forever, Staff
Assist landowners in the Gentile Valley coordinating future Rocky Mountain Power water release in the Bear River Corridor		Supervisors
Act as the political sub-division sponsor if needed for emergency watershed protection for flooding		Staff

## FY2021 (7/1/2021 – 6/30/2022) Annual Plan of Work

### Franklin Soil & Water Conservation District

#### **Priority Area Number 4: Water Resources**

**Goal(s): To improve and maintain the chemical, physical, and biological integrity of Franklin County waters to meet the clean water act.**

<b>Strategies/Tasks for FY2021</b>	<b>Target Dates</b>	<b>Person(s) Responsible</b>
Attend Bear River Basin Advisory Group (BAG) meetings when scheduled.		Staff, George Hitz
Review sub-division requests to protect the district's waters from the negative effects of growth.	Prior to submittal to P/Z	Clinton, Boyd Bradford
Administer, prepare budget, and investigate additional opportunities for the District V Cloud Seeding Consortium program	Aug - Apr.	Supervisors, Technician
Participate with the PacifiCorp Bear River Dam re-licensing Environmental Coordination Committee (ECC)	May	Technician
Plan and submit any project that addresses improvements in water quality or quantity		
Plan and submit any project that addresses improvement in the Nitrate Priority Area		
Follow up with Id Dept of Agriculture and DEQ on Ground water data		DEQ
Assist landowners with water conservation using best management practices and water management plans.		
Provide direct assistance to any irrigation companies that request our assistance in planning for improved efficiencies and water quantity.	Upon request	Contract engineer
Work with IDWR and water right and stake holders to help facilitate Bear River Adjudication		Supervisors and Staff
Assist waterusers with source water protection grant applications.	March	
Provide measuring and calibration to any Irrigation entity that requests it.		Technician, George Hitz, Staff
Participate with Maple Creek Water Users to ensure the BoR Water Smart small grant for efficiency improvements in their canal are completed	July 2020 – July 2022	Supervisors / Staff

## FY2021 (7/1/2021 – 6/30/2022) Annual Plan of Work

### Franklin Soil & Water Conservation District

#### **Priority Area Number 5: District Operations**

**Goal(s): Encourage and develop well-balanced positive district leadership.**

<b>Strategies/Tasks for FY2021</b>	<b>Target Dates</b>	<b>Person(s) Responsible</b>
Invite county commissioner and legislators to regular or special board meetings.	Monthly	Robert Swainston, County Commission
Present annual report to Franklin County commissioners.	March	Supervisors
Assist NRCS as dictated in our existing MOA		
Review and update all MOU/MOA's when necessary.		
Participate in IASCD activities and meetings, including developing resolutions throughout the year.	Nov	Supervisors/Staff
Update policy and procedure manual to make sure it meets all laws and statutes		Chris Hatch
Coordinate programs between neighboring districts	Monthly	Staff
Board/NRCS will tour our district annually or whenever necessary to evaluate BMP's or other conservation practices.		
Discuss and comment on public scoping requests for natural resources issues.		
Attend workshops/conferences to increase knowledge of natural resource concerns - Subject to available funds		Supervisors/Staff
Investigate all grant opportunities to benefit the landowners and get BMP's installed.		
Participate in NACD regional and national meeting—subject to available funds	Biannually	Supervisors / Staff
Coordinate activities with the UACD/North Cache SCD when activities benefit both states		Supervisors / Staff
Arrange for Supervisor training		Supervisors/Staff
Arrange for Staff training that correlates with job responsibilities		Staff
Provide a quarterly timeline and budget review of ongoing projects	Quarterly	Technician
Attend ICRMP meetings semi-annually to stay up to date on current issues certified by PRIMA (Public Risk Management Association)		Staff
Fred Pryor + membership for annual training – based on budget.		Staff
Review of budget to actuals for audit purposes	April	Staff / Supervisors
Complete a workload analysis for regular staff and payroll review subject to available funds	May	Supervisors/Staff

**Idaho Conservation Districts assisting landowners and operators with their conservation choices**

## Resources

Bureau of Economic Analysis U. S. Department of Commerce, 2010 *Franklin County Census*

Curtis, David, June 2000, Natural Resources Conservation Service, personal communication, Preston Idaho

Ecosystems Research Institute, May 2000. *Cub River Watershed Improvement Plan*, Logan Utah

Ecosystems Research Institute, November 1995. *Lower Bear River Water Quality Management Plan*. Logan Utah

Franklin Soil & Water Conservation District, October 1993, *Bear River State Agricultural Water Quality Project*. Preston Idaho

Idaho Transportation Department. September 2002. *U.S. 91 Corridor Plan STP-1490 (102)*, Key No. 7494, IDT: District Five, Pocatello Idaho.

Jankovsky-Jones, Mable. December 1997. *Conservation Strategy for Southeastern Idaho wetlands*. Idaho Department of Fish & Game, Boise Idaho

Mahler, R. L. ; K. E. Keith. January 2002. *Idaho's Nitrate Areas of Concern*. University of Idaho, College of Agricultural and Life Sciences. Moscow Idaho

National Water and Climate Center. December 1998. *Stream Visual Assessment Protocol, Technical Note 99-1* USDA: Natural Resources Conservation Services.

Natural Resources Conservation Service. May 1993. *Geology Report for Bear River*. U. S. Department of Agriculture.

Natural Resources Conservation Service. April 1997. *Interim Soil Survey of Franklin County Area, Part 1*. U. S. Department of Agriculture.

U. S. Department of Agriculture, 1997. *Agriculture Census, Franklin County*.

Various Natural Resource Conservation Services inventories and reports,

Washington State University Cooperative Extension. November 1999. *Northwest Indicator Project*. U.S. Department of Agriculture.