

**PORTNEUF SOIL & WATER
CONSERVATION DISTRICT**

214 East Center Street, Suite 10

Pocatello, ID 83201

Five Year Resource Conservation

Business Plan

July 1, 2023 - June 30, 2027

Annual Plan

July 1, 2022 - June 30, 2023

Table of Contents

Mission Statement.....	Pg 3
Executive Summary.....	Pg 3
Certificate of Adoption.....	Pg 4
Five Year Business Plan	
Section 1: Physical Characteristics.....	Pg 5
Section 2: Economic Conditions and Outlook.....	Pg 8
Section 3: Assessment.....	Pg 9
Section 4: Identify and Prioritize Objectives.....	Pg 11
Annual Work Plan FY 2023.....	Pg 13

Mission of the Portneuf Soil & Water Conservation District

The mission of Portneuf Soil and Water Conservation District is to conserve soil, water, air, native species and their habitats, on private lands as well as urban interface by being the coordinating link for technical, financial, and educational assistance for natural resource management, improvement and conservation.

Executive Summary

The Portneuf Soil and Water Conservation District is one of 50 Conservation Districts in Idaho. Idaho Soil and Water Conservation Districts are political subdivisions of state government but are not state agencies. Conservation Districts are charged with carrying out a program for the conservation, use and development of soil, water, and other natural resources.

Conservation Districts are the primary entities to aid private landowners and land users in the conservation, sustainment, improvement and enhancement of Idaho's natural resources. They are catalysts for coordinating and implementing conservation programs, channeling expertise from all levels of government into action at the local level. Programs are non-regulatory, science-based technical assistance, incentive-based financial programs and informational and educational programs at the local level.

Both by legislation and by agreement the USDA Natural Resources Conservation Service provides technical assistance to landowners and land users through Conservation Districts. Each Conservation District in Idaho has a signed Mutual Agreement with the Secretary of Agriculture and the Governor of Idaho that establishes a framework for cooperation.

This Five-Year Resource Conservation Business Plan was developed not only to guide the Conservation District, but also to encourage cooperation among landowners, government agencies, private organizations, and elected officials. Through knowledge and cooperation, all concerned can ensure a sustainable natural resource base for present and future generations in the Portneuf Soil and Water Conservation District.

This document identifies the resource needs in the Conservation District and presents a resource conservation action plan for meeting these needs.

Certificate of Adoption

The Board of elected supervisors of the Portneuf Soil and Water Conservation District this __ day of _____ does hereby approve the following document known as the Resource Conservation Business Plan. This Plan will be in effect for a five-year period ending June 30, 2027 during which time it will be updated annually and/or amended, as necessary.

As evidence of our adoption and final approval, we do hereby affix our signatures to this document.

_____ Chairman Kevin Koester

_____ Vice Chairman Scott Henderson

_____ Treasurer David Jackson

_____ Supervisor Justin Casperson

_____ Supervisor Brad Kent

Supporting Idaho Conservation Partners (As applicable)

Natural Resources Conservation Service

Idaho Soil and Water Conservation Commission

Idaho Association of Soil Conservation Districts

Section 1: Bannock County Physical Characteristics

Location & District Boundary

The geology of the county can be derived into three broad geological areas: relatively old sedimentary rocks of the mountains, younger sedimentary deposits of the valleys with some inclusions of volcanic rock.

Land Use Cover

Cropland makes up more than half of Farmland use followed by pastureland. Dry crops and hay make up a significant portion of croplands. Pastureland is used mostly for cattle with only a small portion being used for dairy products. Various other livestock is raised throughout the county including horses, pigs, sheep and poultry. Bannock County contains nearly 262,000 acres of federal and state lands with 213,414 acres being Federal land and 48,355 acres being State land.

Geology and Physical Geography

The mountain and hill area, represented by the Portneuf Range, Pocatello Range and Bannock Range, are along the eastern and western sides of the county. The ranges are composed of Precambrian and early Paleozoic quartzite, limestone and shale with some Precambrian metamorphosed volcanic and met sediment included. Younger silicic volcanic rocks occur in the northern and western parts of the Bannock Range. The soils associated with this area are somewhat shallow, well drained, and generally gravelly and stony.

The foothills along Marsh and Mink Creek, and the area southeast of Pocatello are primarily loess- covered sediments of the Salt Lake formation of Pliocene age. This formation is poorly consolidated sand, silt, and gravel of lacustrine and fluvial origin. The soils found in this area are generally deep, well drained, and of medium textures. They may contain gravel in some places.

Between these two mountain ranges, or included with them, are Marsh Creek, Portneuf Valleys, and numerous other smaller valleys or basins. Alluvium, Pleistocene to recent in age, occurs along floodplains of the streams. Inclusions of smaller areas of the Snake River Basalt are located along the Portneuf River near Inkom. Also found in this area are barren rock lands which are among the youngest formations in the county. The soils associated with this area are shallow, too deep, fine- texture, and vary from poorly drained to well drained.

Climate

The climate conditions in Idaho exhibit great variety. In winter, while there are frequent periods of persistent southwest wind with an effect of mildness, there are also stretches of several days' length when the temperature stays below freezing and the daily

minimum falls below zero.

During cold periods, precipitation falling as snow accumulates to a depth of a foot or more. Clouds and unsettling weather prevail throughout the winter with measurable amounts of precipitation on about one-third of the days. Frost depth of two or three feet is common during the winter season.

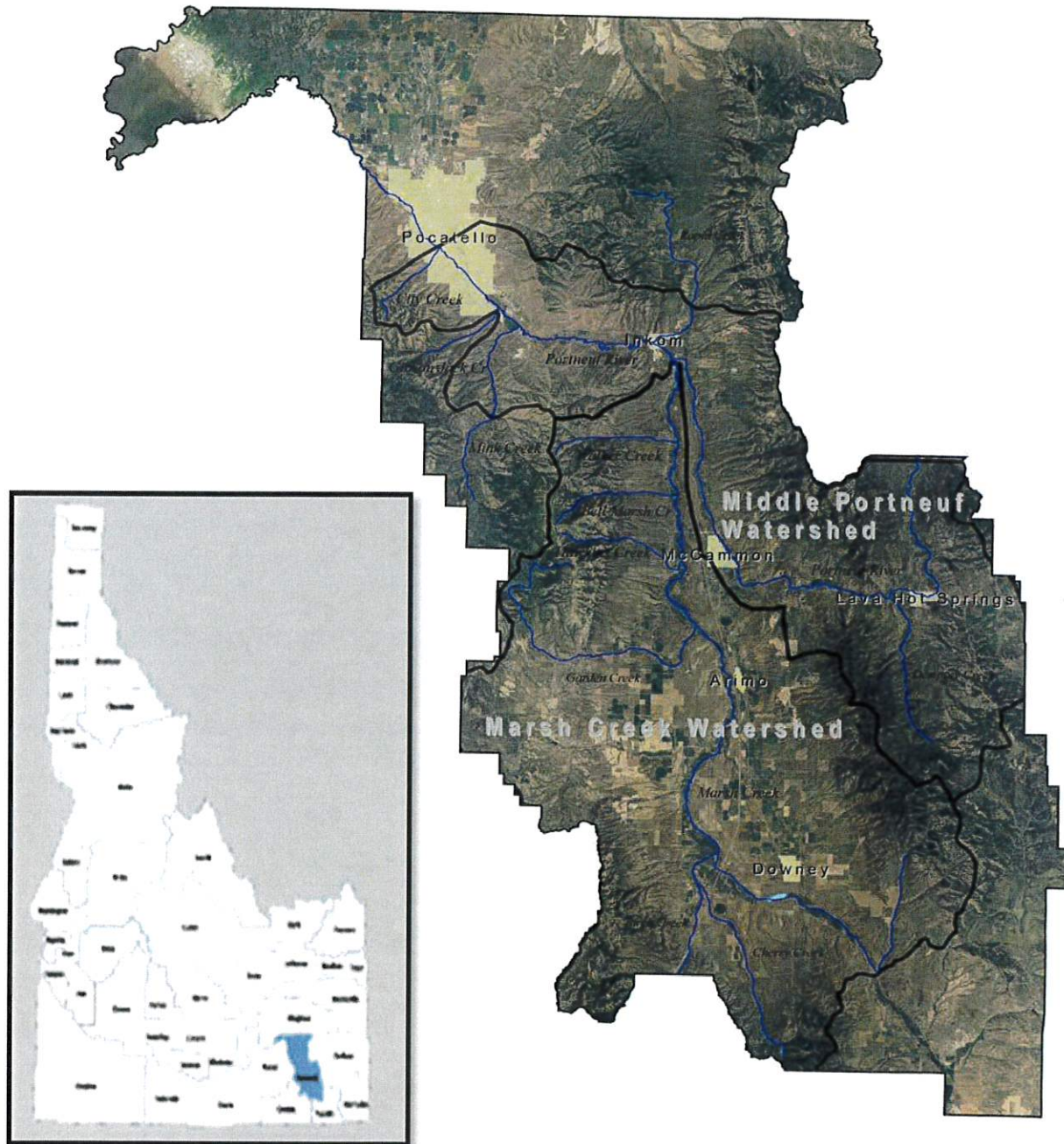
There is a gradual warming in spring, but temperatures at night are generally low through most of April. The average date of the last killing frost is May 4, although the danger period continues until near the middle of May. Normally, spring months are the wettest and windiest. Winds of twenty to thirty miles per hour are common for days at a time. The average date of the first killing frost in autumn is October 5, even though frost has been noted to occur early in September. Winter's first cold wave may appear during late November, but usually not until the latter part of December.

The precipitation varies throughout the county from low of ten inches or less in the Tyhee area to more than thirty inches in the mountains. Most of the precipitation occurs during the fall, winter, and spring. This precipitation comes in the form of rain or snow. Most summer precipitation is limited to short intense local thunderstorm.

-  Middle Portneuf Watershed
-  Marsh Creek Watershed
-  Rivers & Creeks
-  Towns



0 1.5 3 6 9 12 Miles



Section 2: Economic Conditions and Outlook

Population

Bannock County, ID has a population of 86,742 people with a median age of 34 and a median household income of \$51,977.

Bannock County, ID is the 5th most populated county in Idaho and borders Bingham, Caribou, Franklin, Oneida and Power counties. Pocatello, the county seat in the Portneuf River Valley, is a major trade center for southeastern Idaho. It is home to the Idaho Accelerator Center, the Stephens Performing Arts Center and Pebble Creek Ski Area. Spectacular Lava Hot Springs with geothermal pools adds to year-round tourism appeal.

Employment

Bannock County enjoys a diverse and highly skilled labor force with an excellent work ethic. The high-quality workforce combined with the area's natural beauty make Bannock County an attractive location to do business. From 2019 to 2020, employment in Bannock County, ID was affected by the COVID 19 pandemic and decreased at a rate of 2.41%. The most common job groups, by number of people living in Bannock County, are Office and administrative support, and sales. Another stabilizing factor in the local economy has been Idaho State University in Pocatello and the nearby Idaho National Laboratory. Both continue to be major employers. Pocatello and Bannock County, like the rest of southeastern Idaho, benefit from profits generated by local agriculture and food-related manufacturing.

Demographics

The 5 largest ethnic groups in Bannock County, ID are White (Non-Hispanic) (83%), White (Hispanic) (5.02%), Two+ (Non-Hispanic) (3.17%), American Indian & Alaska Native (Non-Hispanic) (2.17%), and Other (Hispanic) (2.08%). None of the households in Bannock County, ID reported speaking a non-English language at home as their primary shared language. This does not consider the potential multi-lingual nature of households, but only the primary self-reported language spoken by all members of the household. 97.9% of the residents in Bannock County, ID are U.S. citizens.

Section 3: Assessment

Water Resources

Nearly all of Bannock County's water resources come from groundwater with the Lower Portneuf Valley Aquifer serving the county's highest populated areas. The aquifer is vulnerable to contamination as there is very little soil cover. There have been several contamination issues in the past. The largest and most well-known included exposure of the aquifer to harmful chemicals from an unlined area of the Fort Hall Mine Landfill. A remediation project led by Bannock County has been ongoing since 2002.

The Portneuf River extends approximately 97 miles and is notably one of the most important natural resources within the county, offering the potential for community, natural, and economic opportunities to adjacent areas. The Portneuf River is fed by approximately 900 miles of intermittent streams and over 550 miles of perennial streams.

Supply and demand of water is a constant struggle in Bannock County as it has a long a frequent history of drought. With continued population growth it is assumed that this struggle will continue.

Air Quality

The Portneuf River Valley is susceptible to strong inversions during the winter months, because of its configuration. In the 1980s it was classified as a Non-Attainment Area by the Environmental Protection Agency (EPA), but that classification was removed in 2006.

Fish and Wildlife

There are 5 endangered species in Bannock County Idaho which are the North American Wolverine, Yellow-billed Cuckoo, Willow Flycatcher, Monarch Butterfly, and Ute Ladies'-tresses. There are currently no critical habitats located in Bannock County, but it is a corridor for migration of several species of birds.

District Operations

Financial Administrative

For general operations, Portneuf Soil and Water Conservation District requires a part-time administrator, and an Outreach and Education Coordinator.

Technical Assistance

Portneuf Soil and Water Conservation District is partnered with the Natural Resource Conservation Service (NRCS) and the Idaho Soil and Water Conservation Commission and is able to seek technical assistance from these agencies.

Portneuf River Subbasin

The Portneuf River subbasin is located in southeast Idaho. The Portneuf River is approximately 100 miles long and drains an area of roughly 1,360 square miles. The subbasin is primarily in Bannock and Caribou Counties but has small portions in Bingham, Power, and Oneida Counties as well. Marsh Creek is the only major tributary to the Portneuf River.

The Portneuf River subbasin has numerous documented water quality problems that affect beneficial uses: 27 stream segments in the subbasin were listed on the 1994/1996 §303(d) list, including the main stem Portneuf River, 16 tributaries, and Hawkins Reservoir. All segments include sediment as a pollutant of concern and roughly half are listed for nutrients. The main stem Portneuf River is also listed for bacteria, flow alteration, and oil and grease. Hawkins Reservoir is listed for dissolved oxygen. Evidence indicates that other pollutants, such as temperature, metals, and PCBs, may also be impairing waters in the Portneuf River subbasin.

For more information, please visit deq.idaho.gov.

Section 4: Natural Resource Goals & Objectives

1. Water Quality

According to the Portneuf River TMDL, 2020, the agricultural implementation plan goal is to restore designated beneficial uses on impaired water-bodies by providing a framework, for which local stakeholders can use to reach the goals established in the TMDL.

- Seek additional grants or other funding opportunities for continuing Portneuf River Watershed BMPs to continue to improve water quality in accordance with the Agricultural Implementation Plan in the Portneuf River TMDL.
- Conduct outreach through newsletter articles, web site, and direct contact with land managers and area residents; tour monitoring sites and projects with elected and other officials, state DEQ officials, legislators, and the public.
- Coordinate with other districts, agencies and partners to work in entire Portneuf and Marsh Creek watersheds for water quality and quantity improvements and assist with monitoring in nitrate groundwater priority areas.

2. Urban (County/Cities) Priorities and Goals

The Goals and Priorities of Bannock County and communities within are to protect water resources, particularly groundwater, restore and preserve wildlife habitats including migration corridors and community engagement.

- Partner with landowner, public and private entities to identify vulnerabilities to water resources, and support activities to mitigate and/or remedy these vulnerabilities by seeking financial resources and engaging with the community.
- Partner with landowner, public and private entities to identify vulnerabilities to wildlife habitats, and support activities to mitigate and/or remedy these vulnerabilities by seeking financial resources and engaging with the community.
- Conduct outreach through newsletter articles, website, Facebook and direct contact with land managers and area residents.

3. District Operations Priorities and Goals:

Soil and Water Conservation will always remain Portneuf Soil and Water Conservation District's top priorities, but to do so requires efficient and effective operations. Portneuf Soil and Water Conservation District will do the following while constantly seeking additional ways to improve operations.

- Continue to work with agencies and partners as needed, keeping MOUs and MOAs up to date, and attending meetings and

conferences.

- Conduct business per District, Idaho, and Federal laws. Comply with all requirements of Idaho open meeting Laws, Public Records Law, and Privacy Act. Conduct third party Audits as required by law.
- Conduct Conservation District elections 2024, 2026, 2028, and recruit board and associate board members as needed.
- Conduct general operations including monthly board meetings, daily fiscal, and administrative management, seeking funding opportunities, grant and project administration, completing reports, attending meetings, and maintaining communication resources including the Annual Newsletter, Website and Facebook accounts.

4. Information – Education Priorities and Goals:

- Increase community engagement through annual newsletter articles, website, Facebook and direct contact with land managers and area residents.
- Annually support and conduct youth environmental education programs and increase participation in poster contest, soil and land judging, IASCD sponsored camps and contests.
- Continue to support and sponsor local Envirothon teams.
- Annually sponsor, support, and participate in environmental educational fairs and events.

5. Soil Quality

- Assist landowners with funding, technical assistance, and information for conservation practices and resource management, particularly erosion control practices.
- Support noxious weed management.
- Continue to seek additional grants or other funding opportunities for BMPs and outreach and education.
- Conduct outreach through newsletter articles, website, Facebook and direct contact with land managers and area residents.



FY2023 (7/1/22 – 6/30/23) Annual Plan of Work Portneuf Soil and Water Conservation District

For Information Contact: Chairman Kevin Koester

Telephone Number: 208-339-6023

Email: portneufswcd@gmail.com

Counties Served: Bannock

Legislative Districts: 29, 30

Board Members: Chairman Kevin Koester, Vice Chairman Scott Henderson, Treasurer David Jackson, Supervisor Justin Casperson and Supervisor Brad Kent

Associates: Hannah Sanger, Dave Jones and Kit Tillotson

Mission of the Portneuf Soil and Water Conservation District:

The mission of Portneuf Soil and Water Conservation District is to conserve soil, water, air, native species and their habitats, on private lands as well as urban interface by being the coordinating link for technical, financial, and educational assistance for natural resource management, improvement and conservation.

Trends & Issues Impacting Conservation in the Portneuf Soil and Water Conservation District

Due to urbanization and future growth in Bannock County, there will be a significant shift in land use. This movement will create a greater focus on conservation for agriculture, while increasing the need for urban conservation planning as well.

Projects Planned, Coordinated or Managed by the Portneuf Soil and Water Conservation District

- Water Quality/Quantity
- Wildlife & Species Preservation
- Urban Conservation
- Outreach & Education
- Soil Quality Improvement

Funding Sources for District Operations and Projects

State of Idaho
Bannock County
City of Pocatello
City of Inkom
Corporate Sponsors



FY2023 (7/1/22 – 6/30/23) Annual Plan of Work Portneuf Soil and Water Conservation District

Conservation District Priority Number 1: Water Quality Improvement

Goal(s): Improve water quality and quantity, protect water resources, and promote water conservation and awareness of water issues.

Objectives:

1. Implement good water practices
2. Strengthen local and regional partnerships supporting the protection of water resources
3. Educate the public on water conservation resource issues

Actions	Target Date	Individual(s) Responsible
Inventory, design, construction, and implementation oversight of BMPs with contracted landowners	Year Long	Board, project coordinator
Outreach, newsletter articles; tour of monitoring sites and projects with elected officials, state DEQ officials, legislators	Year Long	Office Admin., ISCC, Board, Project Coordinator
Water quality monitoring – support of continuous stations, additional monitoring sites	Year Long	Board, Project Coordinator
Seek additional grants or other funding opportunities for Portneuf watershed BMPs, outreach, and education. Collaborate with local city and county officials to achieve conservation goals.	Ongoing	Office Admin., Project Coordinator



FY2023 (7/1/22 – 6/30/23) Annual Plan of Work Portneuf Soil and Water Conservation District

Conservation District Priority 2: Wildlife & Species Preservation

Goal(s): Promote the preservation of native wildlife, species and migrating wildlife creating a balance sharing of natural resources.

Objectives:

1. Implement good land management practices
2. Strengthen local and regional partnerships supporting the protection of wildlife and species preservation
3. Educate the public on wildlife and Species preservation issues
4. Support noxious weed and pest management

Actions	Target Date	Individual(s) Responsible
Inventory, design, construction, and implementation oversight of BMPs with contracted landowners	Year Long	Board, project coordinator
Outreach, newsletter articles; tour of monitoring sites and projects with elected officials, state DEQ officials, legislators	Year Long	Office Admin., ISWCC, Board, Project Coordinator
Promote and support noxious weed management	Year Long	Board, Project Coordinator
Promote and support pest management including the continuation of the Owl Box program	Year Long	Board, Project Coordinator
Seek additional grants or other funding opportunities for Portneuf watershed BMPs, outreach, and education. Collaborate with local city and county officials to achieve conservation goals.	Ongoing	Office Admin., Project Coordinator



FY2023 (7/1/22 – 6/30/23) Annual Plan of Work Portneuf Soil and Water Conservation District

Conservation District Priority Number 3: Urban Conservation

Goal(s): Promote and Implement an Urban Conservation Program, increase healthy community engagement and volunteer actions addressing conservation issues.

Objectives:

1. Promote and educate the public on Urban Conservation.
2. Create and Implement an Urban Conservation Program.
3. Strengthen local and regional partnerships promoting Conservation.

Actions	Target Date	Individual(s) Responsible
Meet with and seek technical assistance from specialists in Urban Conservation.	Year Long	Board, project coordinator
Meet with local leaders and partners and identify Urban Conservation issues.	Year Long	Office Admin., Board, Project Coordinator
Create and Implement an Urban Conservation Program tailored to local issues. Promote using newsletter, website and Facebook.	Year Long	Board, Project Coordinator
Seek additional grants or other funding opportunities for Portneuf watershed BMPs, outreach, and education. Collaborate with local city and county officials to achieve conservation goals.	Ongoing	Office Admin., Project Coordinator



FY2023 (7/1/22 – 6/30/23) Annual Plan of Work Portneuf Soil and Water Conservation District

Conservation District Priority Number 4: Outreach & Education

Goal(s): Increase community engagement and support environmental education programs.

Objectives:

1. Promote and educate the public on Conservation.
2. Support and sponsor environmental education programs.
3. Maintain Website and Facebook page and publish annual newsletter.

Actions	Target Date	Individual(s) Responsible
Reach out to local schools and FFA programs and invite them to participate by creating an Envirothon team with full district support	Year Long	Office Admin., Board, Project Coordinator
Provide support with team building, education, meeting location and expenses.	Year Long	Office Admin., ISCC, Board, Project Coordinator
Offer educational learning opportunities for team members to enhance their knowledge of wildlife, forestry, soils, aquatics as well as current issues by facilitating appropriate contacts.	Year Long	Office Admin., Board, Project Coordinator
Conduct outreach and education using Website, Facebook page and annual newsletter.	Year Long	Office Admin., Board, Project Coordinator
Seek additional grants and other funding opportunities to aid in the travel and education expenses current local environmental education programs.	Ongoing	Office Admin., Board, Project Coordinator



FY2023 (7/1/22 – 6/30/23) Annual Plan of Work Portneuf Soil and Water Conservation District

Conservation District Priority Number 5: Soil Quality

Goal(s): Improve Soil Quality and reduce soil erosion.

Objectives:

1. Implement good land management practices
2. Strengthen local and regional partnerships supporting Soil Conservation
3. Educate the public on Soil preservation issues
4. Support noxious weed and pest management

Actions	Target Date	Individual(s) Responsible
Inventory, design, construction, and implementation oversight of BMPs with contracted landowners	Year Long	Board, project coordinator
Outreach, newsletter articles; tour of monitoring sites and projects with elected officials, state DEQ officials, legislators	Year Long	Office Admin., ISCC, Board, Project Coordinator
Water quality monitoring – support of continuous stations, additional monitoring sites	Year Long	Board, Project Coordinator
Seek additional grants or other funding opportunities for Portneuf watershed BMPs, outreach, and education. Collaborate with local city and county officials to achieve conservation goals.	Ongoing	Office Admin., Project Coordinator

