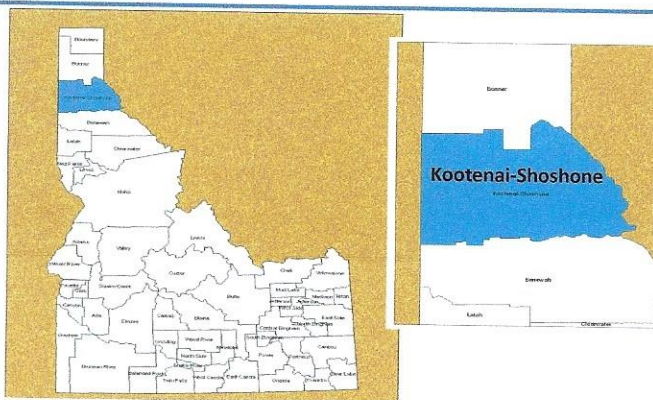


Kootenai Shoshone Soil and Water Conservation District



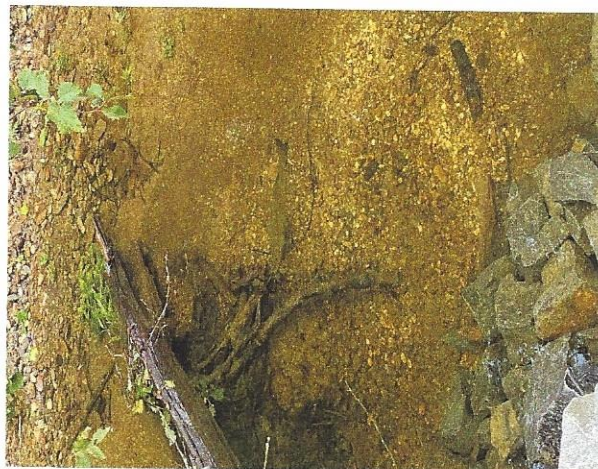
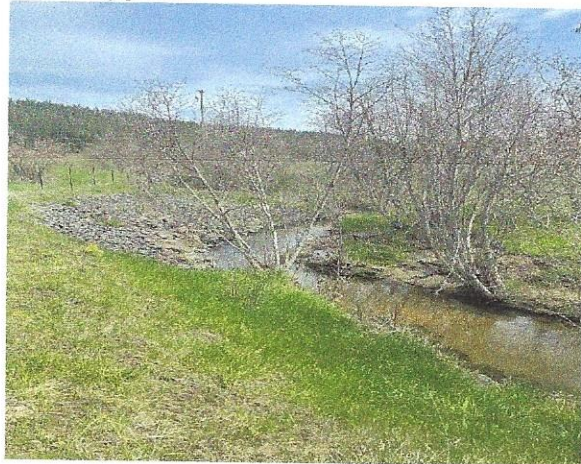
7830 Meadowlark Way, Ste. C-1,
Coeur d'Alene, ID 83815

Tel: 208-762-4939 x101 Email: ksswcd@yahoo.com

KSSWCD Board Meetings: Second Wednesday of the
month, 9:00 a.m.

Water Quality

Mica Creek: The District has been actively working with the landowners within the Mica Creek watershed, and various agencies to develop a watershed restoration project to continue water quality improvements. KSSWCD has led efforts to restore this watershed over the course of the last 15 years. Water quality has improved to the point where Kokanee salmon and Cutthroat trout have returned to Mica Creek to spawn. Plans include both stream and wetland restoration projects. KSSWCD has been awarded a Leading Idaho Grant for this 2022/2023 year and work has started and should be completed by the end of 2023. The District plans on continuing restoration and will continue to apply for upcoming grants.



Top 6 Priorities

1. Cropland (Farm and Pasture Lands)
2. Surface and Ground Water Quality
3. Woodland, Forestry and Silviculture
4. District Operations
5. Watercraft Inspection Stations
6. Information, Education and Outreach

FY 2021 Gross Revenue

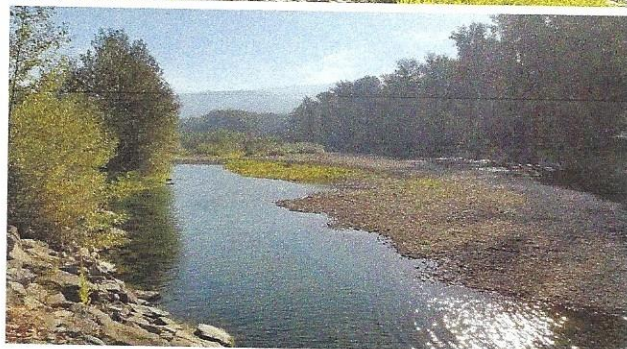
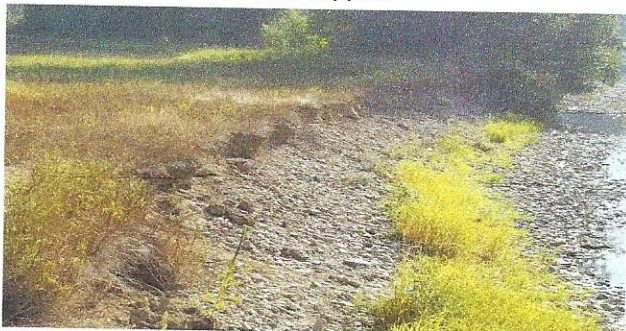
- Watercraft Insp Stations	\$515,777
- Leading Idaho -Mica Creek	\$ 53,460
- Tree Sales	\$ 6,640
- NACD TA Grant	\$ 24,418
- 319 Grant	\$ 72,702
- County Allocations	\$ 9,000

District Mission To maintain the Kootenai Shoshone Soil & Water Conservation District as a leading partner with other government agencies, private landowners and users, and the public in promoting voluntary, non-regulatory locally led conservation and wise stewardship of the natural resources with which our area has been so richly blessed.

Kootenai-Shoshone Soil and Water Conservation District

North Fork of the CDA River - The District was awarded a 319 grant from DEQ to do a streambank restoration project. The project encompasses roughly 900 linear feet across three sites. Two sites are on the North Fork of the Coeur d'Alene River just above the Bumble Bee bridge and the third is located 1.8 miles upriver from Pritchard off the main river road. All sites are in Shoshone County. The project was completed in October 2022.

The District would like to thank all the agencies; DEQ, ISWCC, and the Shoshone County Road Department, and the landowners for all their support



Woodland, Forestry and Silviculture

The District participates in a forestry tree sales program now administered by the Pan Handle Seedling Program (PSP). This year we sold over 48,000 seedlings, a slight decrease from the previous year. We are looking forward to another successful year with more timberland that is being reforested every year.

The Pan Handle Seedling Program is comprised of all four Districts in the Northern Panhandle, Bonner County, Boundary County, Benewah County and now Kootenai Shoshone. These seedlings are locally sourced and grown for Northern Idaho. We have professional foresters on the board that have the knowledge and experience to make the Pan Handle Seedling Program (PSP) a successful program and we anticipate a successful upcoming year of tree sales.

Information, Education and Outreach

The District is looking forward to hosting another Growers Meeting in the near future. The last meeting was sponsored by Kootenai County Aquifer Protection District, Kootenai Shoshone County Farm Bureau, and Idaho Soil & Water Conservation Commission.

Watercraft Inspection Stations

KSSWCD operates 4 watercraft inspection stations throughout Northern Idaho through a grant from ISDA. Each station is staffed with inspectors trained to detect invasive species (mussels) threats that may contaminate and destroy the eco system of our lakes.



District Operations

The District's financial health has been improving. The District has secured several new projects that can sustain the basic District efforts over the next several years. FY 2022 revenues were up substantially, much because of the 4 boat stations. The FY 2022 budget predicts a slight increase, and receipts are coming in on schedule. Hiring of new inspectors has been an ongoing issue as it has through the nation.

We wish to acknowledge the Idaho Soil & Water Conservation Commission and NRCS for the support they provide to the partnership. Corey Bensen with NRCS, Katie Yoder and Bill Lillibridge with ISWCC provide technical support that allows the District to complete conservation projects.

Kootenai Shoshone Soil & Water Conservation District Board Members and Staff

Vacant	Chairman
Bob Burke	Vice-Chairman
Robert Flagor	Supervisor
Linda Ely	Supervisor
Laurin Scarcello	Supervisor
Wes Evans	Supervisor
John Minichino Jr.	Supervisor
Jon Groth	Supervisor
Karla Freeman	Administrator

**IDAHO SOIL & WATER
CONSERVATION COMMISSION**

**PERFORMANCE
REPORT
CERTIFICATION**

DISTRICT: Kootenai-Shoshone Soil and
Water Conservation District

FOR YEAR:

FY 2022

DUE :

December 20, 2022

CERTIFICATION

On behalf of my local Board of Supervisors, I hereby certify that the attached Performance Report is true and accurate, and further submit said Report for the above named District and fiscal year.

A copy of this Performance Report shall be kept at the District office and is available for public inspection.

Bob Burke Vice chair

Board Supervisor Signature

Bob Burke

Printed Name

Nov 9, 2022

Date

208-209-4348

Telephone

ksswcd@yahoo.com

District Email Address

FOR SWC USE ONLY:

DATE OF CONFIRMATION: