

**IDAHO SOIL & WATER  
CONSERVATION COMMISSION**

**FIVE-YEAR (5) PLAN and  
ANNUAL WORK PLAN  
CERTIFICATION**

**DISTRICT:**

South Bingham

**FOR FISCAL YEAR:**

2021

**DUE :**

March 31, 2020

**CERTIFICATION**

On behalf of my local Board of Supervisors, I hereby certify that the attached Five-Year (5) Plan and Annual Work Plan is true and accurate, and further submit said Plan for the above named District and fiscal year.

A copy of this Five-Year (5) Plan and Annual Work Plan shall be kept at the District office and is available for public inspection.

Chris Wride - Chairman

Board Supervisor Signature

Chris Wride

Printed Name

3/19/20

Date

208-397-4917

District Telephone

southbingham@gmail.com

District Email Address

**FOR SWC USE ONLY:**

**DATE OF CONFIRMATION:**

\_\_\_\_\_



## **SOUTH BINGHAM SOIL CONSERVATION DISTRICT**

**58 W. WASHINGTON  
P.O. BOX 854  
ABERDEEN, ID 83210**



## **FIVE-YEAR RESOURCE CONSERVATION BUSINESS PLAN**

**JULY 1, 2020 – JUNE 30, 2025**

**ANNUAL PLAN  
JULY 1, 2020 to June 30, 2020**

## FORWARD

The South Bingham Soil Conservation District is one of 50 Conservation Districts in Idaho. Idaho Soil and Water Conservation Districts are political subdivisions of state government but are not state agencies. Conservation Districts are charged with carrying out a program for the conservation, use and development of soil, water, and other natural resources.

Conservation Districts are the primary entities that provide assistance to private landowners and land users in the conservation, sustainment, improvement and enhancement of Idaho's natural resources. They are catalysts for coordinating and implementing conservation programs, channeling expertise from all levels of government into action at the local level. Programs are non-regulatory; science-based technical assistance, incentive-based financial programs and informational and educational programs at the local level.

Both by legislation and by agreement the USDA Natural Resources Conservation Service provides technical assistance to landowners and land users through Conservation Districts. Each Conservation District in Idaho has a signed Mutual Agreement with the Secretary of Agriculture and the Governor of Idaho that establishes a framework for cooperation.

This Annual Plan/Five-Year Resource Conservation Business Plan was developed not only to guide the Conservation District, but also to encourage cooperation among landowners, government agencies, private organizations, and elected officials. Through knowledge and cooperation, all concerned can ensure a sustainable natural resource base for present and future generations in the South Bingham Soil Conservation District.

This document identifies the resource needs in the Conservation District and presents a resource conservation action plan for meeting these needs.



## **Certificate of Adoption**

The Board of elected supervisors of the South Bingham Soil Conservation District this 19<sup>th</sup> day of March 2020 do hereby approve the following document known as the Resource Conservation Business Plan. This Plan will be in effect for a five-year period ending June 30, 2025 during which time it will be updated annually and/or amended, as necessary.

As evidence of our adoption and final approval, we do hereby affix our signatures to this document.

Chris Wride, Chairman

Richard Line, Vice Chairman

Rob Giesbrecht, Treasurer

Loren St. John, Member

Lance Shackelford, Member

Sam Chandler, Associate Member

Supporting Idaho Conservation Partners

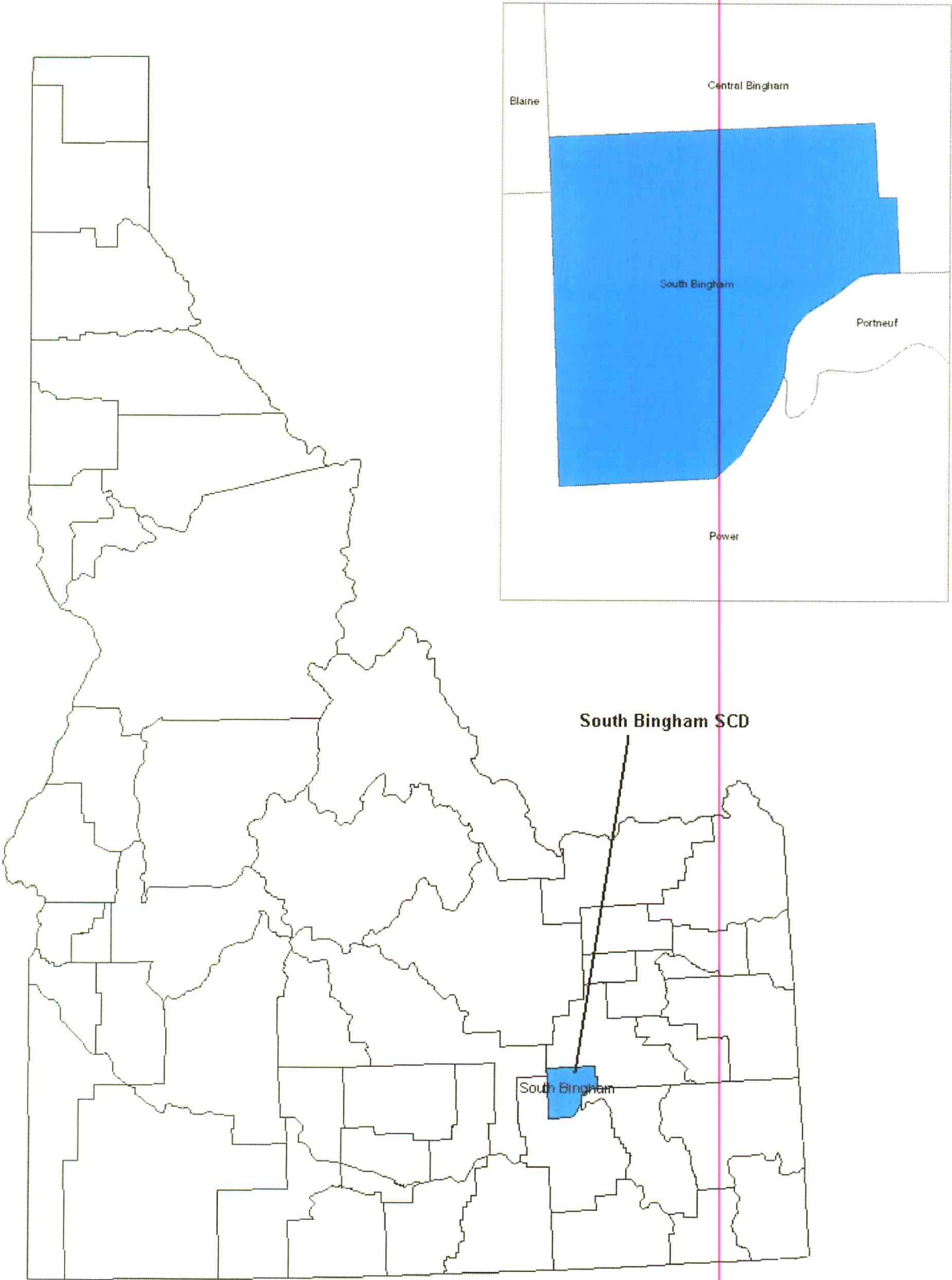
Natural Resources Conservation Service – Nate Matlack

Soil Conservation Commission – Carolyn Firth

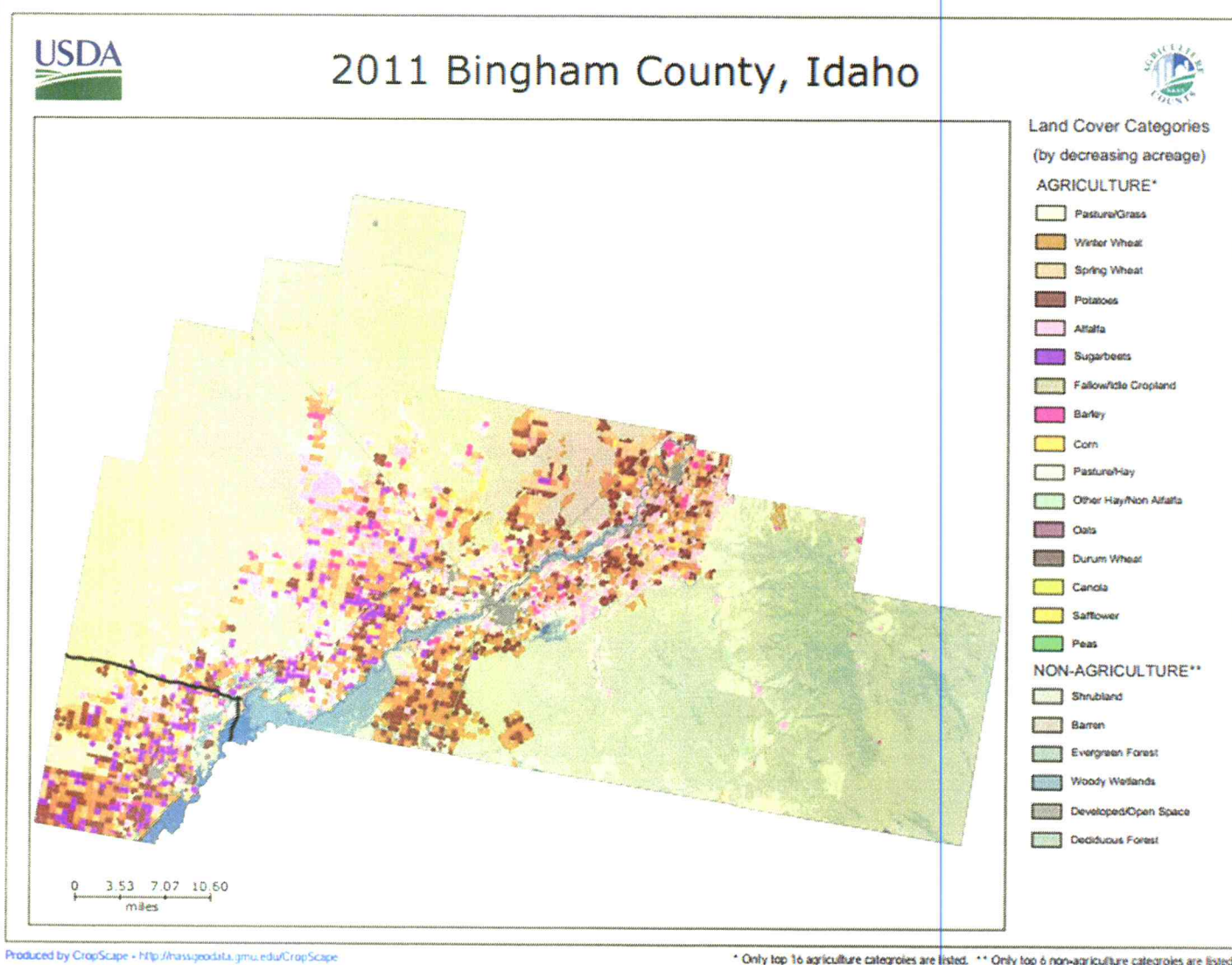
Plant Materials Center – Derek Tilley

(Note: The official signature page is housed in the South Bingham SCD with the official plan)

**Section 1:** *Physical Characteristics of the District (IDAPA 60.05.02.025.01)*



The South Bingham Soil Conservation district, established February 2, 1954 is located in the southwestern corner of Bingham County. It is bordered by Power County to the South, the American Falls Reservoir to the Southeast, Central Bingham Conservation District to the north and east and shares a small border with Blaine Soil Conservation District on the Northwest. Located within the boundaries of the District are the cities of Aberdeen, Sterling and Springfield. The majority of the District consists of irrigated cropland which provides the greatest economic impact within the District. There is also a small portion of rangeland pasture/grass. The majority of land in the District is privately owned with the State of Idaho and Bureau of Land Management owning small portions. With the exception of the northwestern shoreline of the American Falls Reservoir and Danielson Creek there are very few natural water systems within the District.



Produced by CropScape - <http://nass.usda.gov/data/gmu.edu/CropScape>

\* Only top 16 agriculture categories are listed. \*\* Only top 6 non-agriculture categories are listed.

Retrieved from [http://www.nass.usda.gov/Statistics\\_by\\_State/Idaho/Publications/Special\\_Reports/pdf/Cropland%20Data%20Layer%202011.pdf](http://www.nass.usda.gov/Statistics_by_State/Idaho/Publications/Special_Reports/pdf/Cropland%20Data%20Layer%202011.pdf)

U.S. Department of Agriculture, 2010. Retrieved from [http://gis.idaho.gov/portal/maps/gallery/ID10-CDLstate-Web\\_Atlas.pdf](http://gis.idaho.gov/portal/maps/gallery/ID10-CDLstate-Web_Atlas.pdf) on 2/6/11.



## Climate in Southeast Idaho

The South Bingham Soil Conservation District is located in the southwest corner of Bingham County. The average elevation of the area is approximately 4400 feet above sea level. The broad Snake River valley extends to the south and east with intensive agriculture practiced in the immediate area. A desert composed mostly of lava rock along with sagebrush and sand is located north and west of the District.

The climate in the area is characterized by variety. The area's semi-arid climate is the result of the Cascade and Sierra mountains to the west and the Bitterroot and Rocky Mountains to the north which effectively block Pacific moisture. Summer monsoonal moisture intrusions are infrequent and significantly modified by the arid Great Basin of Utah and Nevada. The Rocky and Bitterroot Mountains form the headwaters of the Snake River and receive copious amounts of winter snow. The success of local agriculture is dependent on irrigation, both from deep wells and a system of canals supplied by storage reservoirs on the Snake River.

During winter, brisk southwesterly winds often persist for days or weeks. These winds may moderate cold winter conditions, producing unusually mild temperatures compared to surrounding areas. There are usually a few days each winter when temperatures remain below freezing. Sub-zero temperatures usually occur only a few days each winter. During especially cold outbreaks, snowfall may accumulate to a depth of a foot or more. Cloudy and unsettled weather is common during the winter with measurable precipitation occurring on about one-third of the days.

Spring months are normally wet and windy. Winds of 20 to 30 mph may persist for days at a time. Weather conditions fluctuate quickly during the spring. Afternoon temperatures in the 30's and 40's with precipitation in the form of rain or snow may occur after a period of sunny skies and afternoon temperatures in the 60's or 70's. Thunderstorms are not uncommon and are usually accompanied by rain showers and occasional snow. Low elevations snow pack usually melts quickly during the spring, but high elevation snow pack can persist into late June.

Summer may begin suddenly with a rapid change to warm and dry weather. Home heating is usually not required after the first week in June, but chilly nights can persist into early July. Showers and/or thunderstorms are common from late spring through summer. These storms often produce very localized precipitation. Thunderstorms are seldom severe, and tornadoes occur infrequently in the area. Brief heavy rain, lightning, small hail, and gusty winds may cause very localized damage at times. Long periods of excessively hot weather in July and August are uncommon. Afternoon temperatures often rise into the 90's, however low humidity usually results in overnight temperatures in the 50's or even cooler. The average growing season in the area is around 120 days, extending from late May to late September.

Autumn ushers in cooler weather with daytime highs generally in the 70s in early fall dipping into the mid 40's by mid-November with generally dry conditions. Autumn storms are usually very fast moving, and seldom persist for more than a few days. Sunny, warm days with cool nights are delightful for outdoor activities. Continuous home heating is seldom needed until mid-October. The first cold wave with highs below 20 and lows around 0 or lower may arrive anytime between late November and Christmas. (NOAA's National Weather Service, 4/1/2011. Retrieved from <http://www.wrh.noaa.gov/pih/climate/descrip.php> on 2/7/12)

## **Section 2: Economic Conditions and Outlook (IDAPA.60.05.02.025.02)**

The South Bingham Soil Conservation District's largest city is Aberdeen with a population of 1,950 in 2017. The District consists primarily of rural farmland. Nearly half of the population is employed in an agricultural related industry. Other major employers within the District include the University of Idaho Aberdeen Experiment Station, The United States Department of Agriculture, and the Aberdeen School District. Over half of the population's income is below \$40,000 with a median family income of just over \$38,000. Just over 12% of the residents live in poverty.

## **Section 3: Assessment (IDAPA 60.05.02.025.03)**

### **Trends Impacting Conservation in the South Bingham Soil Conservation District**

- Focus on water quality and quantity compared to other conservation and environmental issues
- Poorly planned growth in agricultural areas
- Limited availability of State funds for conservation
- Evaluate critical Sage Grouse Habitat
- Number of producers vs. acres in production
- Urban impact on agriculture production

### **Strategies to Address Trends**

- More education but not the usual (more outreach instead of publications)
- Increased focus on youth outreach programs
- Determine opportunities to coordinate outreach activities with traditional and non-traditional partners.
- Raise awareness of conservation values with state legislature and elected officials – help decision makers be better informed
- Strengthen Locally Led efforts
- Become involved with County Planning and Zoning issues impacting natural resources.
- Establish a data base to track resource conditions
- Solicit input to improve Annual Plan/Five-Year Resource Conservation Business Plan
- Identify the information methods to communicate with small land owners
- Sponsor project proposals with other districts
- Training for Conservation District Supervisors and staff
- Meet often with partners and potential partners for new ideas and projects.

### **Staffing Needs**

- Conservation District Manager
- Part-time Conservation District Administrative Assistant with benefits
- Full-time District Conservationist



## Estimated Annual Budget Needs

Jul '20 - Jun 21

### Income

County Allocation	2,000.00
Farm Lease	26,000.00
Hay/Straw Income	15,000.00
PMC Grant Administration	40,000.00
State Allocation	11,000.00
Weed Mat/Tree Sales	1,500.00
<b>Total Income</b>	<b>95,500.00</b>

### Expense

Contributions	1000.00
District Employee Travel	2,500.00
Dues	2,500.00
Hay Expense	2,000.00
Insurance	2,000.00
Misc. Expense	1,000.00
Administrative Expenses	4,000.00
Payroll Expenses	44,000.00
Property Taxes	900.00
Public Outreach	2,000.00
Repair & Maintenance	8,000.00
Supervisors Travel	4,000.00
U of I Payroll	8,000.00
Utilities	3,000.00
Water Assessment	3,400.00
<b>Total Expenses</b>	<b>88,300.00</b>

## Key Decision Makers

- Citizens in South Bingham Soil Conservation District
- Bingham County Commissioners
  - Commissioner Whitney Manwaring
  - Commissioner Mark Bair
  - Commissioner Jessica Lewis
- Elected City Officials and Planning and Zoning Board Members
  - Mayor Larry Barrett,
  - Council Members
    - Karl Vollmer
    - Diane Hernandez
    - Alan Summers
    - Mary Leisy
    - Brian Schneider
    - Karalee Krehbiel
- State legislators representing Conservation District
- U.S. Senators, Representatives and Staffers
- Conservation District Supervisors-Chris Wride, Richard Line, Rob Giesbrecht, Lance Shackelford, Loren St. John, and Sam Chandler (Associate Member)
- Other Government Entities and Groups-USDA Natural Resource Conservation Service, USDA Farm Service Agency, Idaho Fish and Game, Bureau of Land Management, Idaho Department of Environmental Quality, Aberdeen School District

## Section 4: *Identify and Prioritize Objectives(IDAPA 60.05.02.025.04)*

**Priority 1: Plant Materials Center related to District priorities in the areas of rangeland, pasture land and hay land:** The Aberdeen Plant Materials Center finds plant solutions for critical natural resource concerns in the Intermountain West that support productive range and pasture land and water and air quality. The District's objective is to maintain a complete plant material program by maintaining viable facilities necessary for the program.

- ❖ By April 30<sup>th</sup> the District will review finances to ensure the ability to maintain facilities and equipment
- ❖ By April 30<sup>th</sup> the District will determine the amount of funds available to support the summer labor program
- ❖ Bi-annually the District will invite Plant Materials Center personnel to provide updates on program status and needs

**Priority 2: Information Education:** The District maintains a presence in the Aberdeen school district through the annual poster contest, educational field trips and the scholarship program. The District has a responsibility to increase public awareness of the importance of conservation.

- ❖ By May 31<sup>st</sup> all 5<sup>th</sup> grade students will have the opportunity to compete in the conservation poster contest
- ❖ By May 31<sup>st</sup> local High School seniors will have an opportunity to compete in the scholarship program
- ❖ By May 31<sup>st</sup> the District will provide local educators with information and scholarship opportunities to participate in the summer Ag in the Classroom summer workshops and/or tours.

### **Priority 3: Irrigated Cropland:**

- ❖ Projects related to the conservation of water and power on irrigated cropland continues to be a priority in the District.
- ❖ Projects aimed at controlling wind erosion on cropland continue to be a priority in the District

**Priority 4: Fish, Wildlife and Water Quality:** The District will continue to encourage the development of shelterbelts to improve habitat and will work towards building relationships with landowners in the Springfield Lake/Danielson Creek area.



- ❖ The District will work to increase public awareness on funding opportunities for projects related to fish, wildlife and water quality
- ❖ The District will work towards establishing habitat for Monarch Butterflies by creating a Monarch Garden and working with Land owners to create milkweed beds for Monarchs to feed.

**Priority 5: Recreation:** The District will provide assistance to reduce conflict between landowners and recreation.

#### **Section 5: Water Quality Component (IDAPA 60.05.02.025.05)**

The South Bingham SCD has been proactive in beginning work on Danielson Creek prior to its listing on the §303(d) list. The installation of a demonstration project on the Chandler property included the reduction of livestock access, heavy use protection, installation of riparian buffers and diversion of agricultural runoff to protect the watershed from pollutants and erosion.

## **American Falls Sub Basin**

### **Sub basin at a Glance**

Hydrologic Unit Code	17040206
Size	2,869 square miles (1.8 million acres)
§303(d) Listed Stream Segments	American Falls Reservoir, Snake River, McTucker Creek, Bannock Creek, Moonshine Creek, Rattlesnake Creek, West Fork Bannock Creek, Knox Creek
Beneficial Uses Effected	Cold water aquatic life, salmonid spawning, primary and secondary contact recreation, domestic water supply, aesthetics
Pollutants of Concern	Sediment, nutrients, bacteria, dissolved oxygen, flow alteration
Major Land Uses	Agriculture, grazing, urban
Date Submitted to U.S. EPA	September 2006
Public Comment Period for Revised Document	April 1 - May 1, 2009

### **Overview**

The American Falls Sub basin covers 2,869 square miles in southeast Idaho; much of which is within the Fort Hall Indian Reservation. American Falls Reservoir is the predominant water body in the sub basin and provides both irrigation water and electricity.

TMDLs were developed for nutrients on 17 water bodies in the sub basin and for sediment on nine water bodies. TMDLs were also developed on nutrients and sediment for six point sources of pollution. Two of the point source waste load allocations (sediment from the city of Blackfoot's storm water runoff and nutrients from the Aberdeen wastewater treatment plant) require a reduction from current estimated waste loads.

American Falls Reservoir and McTucker Creek are §303(d) listed for flow alteration. However, the U.S. Environmental Protection Agency does not believe that flow alteration is a pollutant as defined by the Clean Water Act. Since TMDLs are not required for water bodies impaired by pollution but not pollutants, TMDLs were not developed for flow alteration.

TMDLs were also not established for dissolved oxygen or bacteria. Dissolved oxygen was listed for the Snake River and American Falls Reservoir. Data did not indicate dissolved oxygen was a problem in Snake River, and South Bingham SCD



it was assumed that a nutrient TMDL will bring dissolved oxygen levels in the reservoir into compliance with water quality standards. There were insufficient data to determine if bacteria impair recreation in Bannock Creek, so more data will be collected to determine beneficial use support.

The July 2006 analysis recommended that American Falls Reservoir be delisted for sediment and the Snake River be delisted for dissolved oxygen and nutrients. It is anticipated that American Falls Reservoir and the Snake River will be listed for temperature on future §303(d) lists. The document also recommended that Danielson Creek, Hazard Creek (Little Hole Draw), and Sunbeam Creek be added to future §303(d) lists.

In March 2009, the document was revised as a requirement of a contested case settlement agreement between J.R. Simplot, the city of Pocatello, and DEQ. Changes to the plan include:

1. Removal of nitrogen allocations for tributaries and point sources
2. Adoption of a tiered phosphorus target to achieve water quality standards and support beneficial uses with an interim phosphorus target of 0.07 mg/L total phosphorus
3. Ability to allow water pollutant trading and develop a trading framework if pollutant trading is deemed viable in the watershed

## **Streams and Pollutants for Which TMDLs Were Developed**

### **McTucker Creek**

**Nutrients (phosphorus, nitrogen), sediment**

### **Danielson Creek**

**Nutrients (phosphorus, nitrogen), sediment**

---

## **Section 6: *Identify and Prioritize Projects (IDAPA 60.05.02.025.06)***

### **Natural Resource Project Priorities and Goals:**

- Conduct alfalfa and grass hay sales
- Maintain viable facilities for plant materials program
- Annual 5<sup>th</sup> Grade Tour
- Conservation poster contest
- Natural Resource Camp recruitment
- High School Senior Scholarship program
- Ag in the Classroom sponsorship
- Cooperate with Power SCD on annual tree sales to encourage shelter belts and wind breaks
- Partner with Central Bingham SCD on annual weed mat sales
- Improve soil and water quality in the Springfield Lake / Danielson Creek Area
- Complete testing and determine what work needs to be done in the Springfield Lake / Danielson Creek Area
- Review the results of the water monitoring done on Danielson Creek to determine the water quality and possible issues that need to be addressed
- Build a working relationship with the landowners, getting them involved in the planning stages of the project
- Increase the awareness of the different types of funding that may be available to the landowners
- Help landowners in the planning and completion of an improvement project(s) on Springfield Lake / Danielson Creek Area

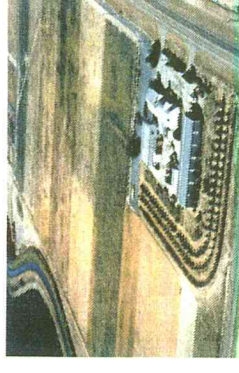
- Participate in Sage Grouse LWG, Big Desert and State Advisory Committee
- Develop social media articles citing the benefits of best management practices.
- Identify and advise cooperating agencies, e.g., NRCS, ID F & G, of opportunities to improve wildlife habitat on irrigated lands with grass and shrub plantings on unused areas like pivot corners. Advise landowners of available cost-share program offerings, e.g., ID F & G—HIP, NRCS—EQIP, to offset the cost of such plantings
- Monitor and advise NRCS of areas in the South Bingham SCD that need further attention to meet their Food Security Act (1985 FSA) obligations, i.e., severe wind erosion areas
- New supervisors will complete New Supervisor Training.
- Complete effective and efficient operations including accounting, personnel management, training and development, annual planning and reporting.
- In cooperation with Conservation Districts develop and carry out an effective legislative outreach program.
- Advertise services and projects monthly to increase public awareness and interest.

Implementation of these projects are ongoing and shall take place through the fiscal year beginning July 1, 2020. The South Bingham Soil Conservation District Board Supervisors and staff will oversee the implementation of these projects with the support of cooperating agencies as needed.



conserving  
natural resources  
*for our future*

## FY2020 (7/1/2020 – 6/30/2021) Annual Plan of Work South Bingham Soil Conservation District



### Conservation District Priority Number 1: Plant Materials Center

**Goal(s):** Maintain viable facilities to carryout plant materials program

**Objective:** Maintain a complete plant materials program

Actions	Target Date	Individual(s) Responsible
Review finances to ensure district's ability to maintain facilities and equipment	Year Long	Wride, Shackelford, Line, St. John, Giesbrecht
Invite PMC personnel to present bi-annual updates or as other needs may arise	Bi-Annual	Vollmer
Advertise and accept bids for annual alfalfa sales	Feb. of Even Years	Wride, Shackelford, Line, St. John, Giesbrecht, Vollmer
Advertise and accept bids for grass straw sales	Annually in October	Wride, Shackelford, Line, St. John, Giesbrecht, Vollmer
Review finances and determine the funds available to support the summer labor	Annually in April	Wride, Shackelford, Line, St. John, Giesbrecht

South Bingham Soil Conservation District assisting land managers with their conservation choices



## FY2020 (7/1/2020 – 6/30/2021) Annual Plan of Work Soil Bingham Soil Conservation District

### Conservation District Priority Number 2: Public Outreach

**Goal(s):** Further educate the community on the importance of conservation.

**Objective:** Increase public awareness of the importance of conservation

Actions	Target Date	Individual(s) Responsible
Education Day and poster contest for 5 <sup>th</sup> grade	5/31/21	Vollmer
Natural Resource Camp recruitment	1/31/21	Vollmer
Scholarship Program	5/31/21	Wride, Shackelford, Line, St. John, Giesbrecht, Vollmer
Participate in Arbor Day with schools	5/31/21	Wride, Shackelford, Line, St. John, Giesbrecht, Vollmer
Offer Ag in the Classroom sponsorship to an educator	5/31/21	Wride, Shackelford, Line, St. John, Giesbrecht, Vollmer
Schedule and hold 10 to 12 Board meetings annually	Monthly	Wride, Vollmer
Develop and submit Conservation District Annual Plan of Work and when required the District 5 Year Plan of Work (Antidegradation Plan)	3/31/21	Vollmer
Develop and maintain employee and staff development including attendance at IASCD Division Meetings, IASCD Annual Conference, and other local, state or regional meetings	Year Long	Wride, Shackelford, Line, St. John, Giesbrecht, Vollmer
Distribute information to local farmers about better soil health through cover crops, low tillage, etc.	4/30/21	Wride, Shackelford, Line, St. John, Giesbrecht, Vollmer



## FY2020 (7/1/2020 – 6/30/2021) Annual Plan of Work South Bingham Soil Conservation District



### Conservation District Priority Number 3: Irrigated Cropland: Encourage the development of shelter belts and wind breaks

**Goal(s): To help preserve and protect our soils from wind erosion by use of shelter belts and wind breaks**  
**Objective: Work on public awareness of the benefits of shelter belts and wind breaks**

<b>Actions</b>	<b>Target Date</b>	<b>Individual(s) Responsible</b>
Create better information that is readily available to the public on wind breaks and shelter belts.	Year Long	Wride, Shackelford, Line, St. John, Giesbrecht, Vollmer
Cooperate with Power SCD to develop a better tree program that will encourage people to plant trees making them more available at more affordable prices.	Year Long	Wride, Shackelford, Line, St. John, Giesbrecht, Vollmer
Work with partners that may help with the design and development of the shelter belts and wind breaks and create a more functional team.	Year Long	Wride, Shackelford, Line, St. John, Giesbrecht, Vollmer
Coordinate with interested landowners in the design and implementation of shelter belts and wind breaks	Year Long	Giesbrecht, Vollmer, Wride, Shackelford, Line, St. John, Giesbrecht, Vollmer
Partner with the local Aberdeen/Springfield Canal Company on funding and implementing a system for electronic water monitoring and delivery	Year Long	Wride, Shackelford, Line, St. John, Giesbrecht, Vollmer





## FY2020 (7/1/2020 – 6/30/2021) Annual Plan of Work South Bingham Soil Conservation District



### Conservation District Priority Number 4: Fish, Wildlife, And Water Quality: Springfield Lake / Danielson Creek Area

**Goal(s):** Determine what work needs to be done in the area

**Objective:** Improve soil and water quality in the area

<b>Actions</b>	<b>Target Date</b>	<b>Individual(s) Responsible</b>
Consider the effects of land use (i.e. recreation, farming, grazing) on water quality and how to implement water savings techniques	Year Long	Wride, Shackelford, Line, St. John, Giesbrecht, Vollmer
Build working relationships with the landowners getting them involved in the planning stages of a project	Year Long	Wride, Shackelford, Line, St. John, Giesbrecht, Vollmer
Increase the awareness of the different types of funding that may be available to the landowners (i.e.\$319 Grants)	Year Long	Wride, Shackelford, Line, St. John, Giesbrecht, Vollmer
Coordinate with landowners in the planning and implementation of improvement projects on Danielson Creek / Springfield Lake	Year Long	Wride, Shackelford, Line, St. John, Giesbrecht, Vollmer
Maintain Monarch Garden at district office. Work with land owners to provide monarch habitat.	Year Long	Wride, Shackelford, Line, St. John, Giesbrecht, Vollmer





conserving  
natural resources  
*for our future*

## **FY2020 (7/1/2020 – 6/30/2021) Annual Plan of Work South Bingham Soil Conservation District**

### **Conservation District Priority Number 5: Recreation**

**Goal(s): Enhance the beneficial use of recreational resources between recreational entities, grazing associations, local working groups and ranchers.**

**Objective: Seek partnerships with recreational entities/users to enhance the resources in the South Bingham Soil Conservation District**

<b>Actions</b>	<b>Target Date</b>	<b>Individual(s) Responsible</b>
Work with local grazing associations and coordinate with local Sage Grouse Working groups and recreational users to enhance the resources on the Big Desert.	Year Long	Wride, Shackelford, Line, St. John, Giesbrecht, Vollmer
Seek cooperation from landowners interested in assisting the District in addressing recreational uses of resources within the District.	Year Long	Wride, Shackelford, Line, St. John, Giesbrecht, Vollmer
Develop cooperative working relationships with public land management agencies to assist in the planning and enhancement of recreational opportunities. (i.e.: Aberdeen Gem Trail, Idaho Fish and Game, Bingham County, City of Aberdeen)	Year Long	Wride, Shackelford, Line, St. John, Giesbrecht, Vollmer

South Bingham Soil Conservation District assisting land managers with their conservation choices